



Patrick MacManaway

President's Address

Welcome to this Spring Edition of Dowsing Today, where we look forward to an exciting season of dowsing events and activities. You will be seeing increasingly extended calendars for both Affiliated Local Group and Special Interest Group events.

We are excited to be holding this year's Conference in the town of Malvern, where we have our office and street presence. This will introduce our membership to the Malvern area and its many interesting dowsing opportunities – not least of which of course are the world famous springs along the ridge of the hills behind the town. Accommodation both at the hotel where the event will occur and also generally in Malvern is limited, so do make all arrangements early to avoid disappointment. Please see the details enclosed with this issue.

We are very excited to now be circulating, both with and within the pages of Dowsing Today, the newsletters of all of our Special Interest Groups – Earth Energies, Water Divining, Health and Healing and Archaeology. We feel that whatever their level of activity within the Society, all members will be interested and stimulated to know of the increasingly broad and deep range of research, training and events for all levels of dowser that are occurring throughout the country.

As many members have been joining one or more of the Special Interest Groups, with separate subscriptions necessary in addition to membership of the Society, the total of BSD-related subscription costs has escalated. We have been exploring ways to support the increasing activities of the Society while reducing the cost to members down to the minimum possible. To this end, the Council has considered the recommendation of the Finance Committee to remove individual subscription from the cost of joining the Special Interest Groups, to reduce the Society's expenses by centralising the administration of the groups, and to slightly increase the annual membership fee of the Society overall to balance the adjustment. We are excited to now offer unrestricted membership to all of the Special Interest Groups and know that all our members will enjoy the expanded editions of Dowsing Today and the news of dowsing in its many different applications.

Our office is running increasingly smoothly following our transitional year, and we offer our heartfelt thanks to John, Helen, Sylvia and Liz, cheerfully working well together creating a very strong and effective team at the heart of our Society.

Wishing you all the very best of dowsing,

Patrick MacManaway



Professor Peter Stewart

The BSD Goes to Mars

ASTRO-DOWSING & ASTRO-REMOTE VIEWING AT BSD CONGRESS 2004

In 1960-62 I was a Rocket and Space Scientist and Satellite Systems Engineer, working in the Astronautics Department of the Hawker Siddeley Advanced Projects Group at Kingston Upon Thames.

At the time the American and Soviet Space Programmes were in the planning stages. The Americans were planning a huge rocket, the "Nova" which was much larger than the "Saturn" and would have been able to carry large payloads of equipment and material to the lunar surface. It was expected at the time that an International Lunar Laboratory would be created on the Moon under the auspices of the United Nations in much the same way as an International Antarctic base.

The Hawker Siddeley Company wished to position itself as an accredited industrial supplier of equipment to the lunar exploration project. As a Fellow of the Royal Geographical Society and a Geologist, my relevant background experience consisted of Cave Exploration and Cave Diving, using self-contained oxygen breathing equipment. I had, in 1960, also been selected by the British Interplanetary Society for a BBC Programme as one of 5 Britons most likely to be first into space if the British Space Programme continued and developed.

For this reason I was asked by Hawker Siddeley to continue and develop some private research I had previously carried out on the objectives and requirements

for a lunar surface exploration programme. This would include the specification and design of vehicles for a trans-lunar expedition, similar to those used on the (then) recent crossing of Antarctica by Sir Vivian Fuchs and Sir Edmund Hillary.

When I carried out my study, a crucial piece of information required for the design of the vehicle was the bearing pressure of the lunar surface and thickness of the dust. This would determine the size of the tracks to support the weight of the vehicle. There was no rational way in which this information could be obtained, indeed one astronomer – Thomas Gold – at the time suggested that landing vehicles could sink and be engulfed by the dust.

By now, as a dowser, I had come to realise that I could ask any question and expect to dowse the answer. So, during a dowsing session I asked my question on the bearing pressure, dowsed and received what I believed to be a meaningful answer which I then used as the basis for my design of the Lunar Surface Exploration Vehicle (LSEV). Some years later the American Astronaut David Scott of "Apollo 15" (who drove a Lunar Rover on the surface) confirmed in conversation that my dowsed bearing pressure was reasonably accurate. In my study I proposed two exploration traverses across the lunar surface and I dowsed along these traverses on a map of the moon to check and pick up any interesting features along the way. This was probably the first in recent times that "Astro-Dowsing" had been used for such a serious scientific and engineering purpose.

The BSD Goes to Mars

In 1973, Ingo Swann, A Remote Viewer at Stanford Research Institute (SRI) in California carried out an exploratory experiment to attempt to remote view the planet Jupiter. The experiment was designed to discover the ultimate range of the human remote viewing capability. The experiment was supervised by Dr. Hal Puthoff and Russell Targ, both previously laser physicists. At the time the NASA/JPL "Pioneer 10" and "Pioneer 11" space probes were in transit to Jupiter arriving later in 1973 and in 1974. They would provide scientific feedback to compare with the information obtained by remote viewing. Swann obtained some interesting data:

- He detected a previously unknown ring around the planet which was later confirmed by NASA from "Voyager 2" in 1979.
- He detected a Hydrogen mantle (confirmed Sept. 1973), a high infrared reading, a temperature inversion and water and ice crystals (confirmed 1975).
- He also detected what he described as "mountains" which at the time were dismissed as Jupiter was thought to be a "gas planet". However in the aftermath of the Shoemaker Levy Comet impacts, large craters appear to have been created on the Jovian surface which appear to have persisted, their circular contours emerging from the thick cloud cover.

This experiment clearly shows the validity of using remote viewing to explore the solar system.

In my Level One Seminars and Workshops I teach my students to remote dowse and remote view the "Apollo" landing sites on the surface of the Moon to identify any artifacts left behind by the astronauts, using a map of the Moon as a proxy. This work has been quite successful and the results raise questions on the conspiracy theory.

During Christmas 2003, one of the big mysteries was "What happened to the British Space Probe, 'Beagle 2'?" Did it land on Mars? If so where was it? The U.S. survey satellite orbiting Mars carried high resolution and stereo cameras but had been unable to locate it.

What an opportunity for BSD Members at my workshops at the 2004 Congress on "Breaking New Ground" to locate "Beagle 2", and describe its condition and the reason for its failure where science and the current technology had failed! I decided to set up an experiment. Scientifically, I had, at the time, a low expectation of success but felt that the opportunity should be taken with this unique group.

In order to attempt a rough calibration of the accuracy of those taking part I provided maps and asked them to map dowse, and remote view, Glastonbury Abbey to identify the positions of the two graves of King Arthur (I knew these locations accurately from discussions with my late friend the eminent archaeologist Dr. C.A. Ralegh Radford and on-site work).

At my two Workshops I asked those present, who wished to take part in the experiment, to dowse on a map of Mars to attempt to find "Beagle 2" and to view and describe its condition. I then asked them to answer a number of questions in a "visit report". Thirty-four reports were handed in for the two Workshops. It would appear that roughly one third of the BSD members attending my workshops on the 11th/12th September 2004 (circa 100) were map dowasers.

One possible theory that had been advanced why "Beagle 2" could not be found on the Martian surface was that the angle of entry into the Martian atmosphere had been too shallow and that the probe had skimmed off the Martian atmosphere, like a flat stone off the surface of a pond. It had been suggested that the probe had disappeared off into deep space. In my Questionnaire I asked this question and seven of the dowasers who submitted a report supported this solution.

Overwhelmingly however, 27 out of the 34 Remote Dowasers/Remote Viewers at the Workshops who submitted reports (80%), located "Beagle 2" on the surface of Mars, gave the co-ordinates of its position and described its condition. Some also gave a reason why it had not responded to commands on Christmas Day 2003.

Twenty-six of the dowasers submitted coordinates for the location of "Beagle 2" and 21 remote viewed and described its condition.

My procedure for the exercise was to show on an OHP an image of "Beagle 2", opened, to provide an unambiguous clear target for the dowasers to "lock on" to.

I firstly provided the dowasers with a photographic map of Mars with no coordinates, nor any other information on the landing sites of any Mars Probes. I asked those taking part to firstly dowse on this map to obtain the location of "Beagle 2" and to remote view and describe its condition. I had made enquiries from the "Beagle 2" team with no result so the only map that I was able to obtain which gave the Martian coordinates unfortunately also gave the expected impact point of "Beagle 2". I ensured that this second map was not accessible to the dowasers and covered during the initial dowasing operation. Only when the dowasing was completed on the first map were the dowasers allowed a sight of this second map in order that they could then use it to derive the dowased coordinates and location of the target. It may be that some did notice the expected "Beagle 2" impact point but this was an unavoidable weakness.

The results provided by the dowasers were as follows:

Latitude 20°	Longitude 10° near Rutherford
Vertical 60°	Horizontal 36°
Latitude 55°	Longitude 60°
North 30°	80°
50° West	31° South (In the Columbus area)
310°	-10°
303° East on equatorial line, 3° Latitude North	
-60°	30°
-30°	-65°
0°	30° 120°
50° latitude	60° longitude
-30° latitude	60° longitude
260°	5°
-75°	-15°
East 315°	8° South
270 latitude	5°
90°	10°
0°	60°

Thus 18 Dowasers gave coordinates and 8 gave a drawing (26 total) but it is obvious that they experienced difficulties with specifying and identifying the coordinates. I now realise that detailed instructions should have been given on how to generate the co-ordinates to an agreed standard. A rough analysis does suggest some limited

The BSD Goes to Mars

clustering in an area bounded by latitudes +10 North and -10 South and longitudes 240 to 310 degrees. The coordinates of the expected touch down location of Beagle 2 were marked on the map of Mars and were at latitude approximately 10 degrees North and longitude 270 degrees. So there was indeed some clustering in the expected touchdown area. In describing the condition of Beagle 2, a total of 21 responses were provided.

Descriptions were:

"Antenna not pointing in the correct direction",

"Damage to communications unit"

"Only two of the circular discs present – parachute failed"

(A) "Only one part of Beagle 2 is now above the Martian surface. Communication system burnt out"

"Flight wing smashed – communication system broken"

(A) "It seems to bury itself upside down and couldn't open. There is a rip in the side"

"3rd outer blue dish missing"

(A) "Buried 23 inches in dust fragmented into 426 pieces"

"Can't open, damaged but not burnt out", "Three discs one separate"

(A) "Did not open. Three quarters buried in sand or dust – cannot see damage"

"Damaged one disc missing two damaged. Instruments damaged on landing"

"Beagle is broken into two pieces – structural damage with electronics and computer damage on landing. Computer, Electrical and structural failure"

(A) "Only 10% intact broken into about 500 pieces, because it had smashed onto the surface of Mars"

"Beagle 2 consumed by fire on impact"

(A) "Part buried with some disintegration – total power failure"

(A) "Most close together – all dishes disconnected. One dish was seven diameters away. Broke up in the atmosphere due to excessive speed. Partly buried in the dust or sand."

"Middle section only survives"

"At a 45° angle and failed to open. Could not open because of angle of landing."

"Crumpled up – damaged antennae"

(A) "It is hidden from view. The middle plate is damaged. It is covered by dust"

It would appear that eight responses (A) indicated that Beagle 2 is buried or partly buried in the Martian dust. This would explain why it is not visible to the cameras in the NASA survey satellite in Martian orbit. I think it is remarkable that of three responses, one said it was buried in 23 inches of dust and was fragmented into 426 pieces whilst another said it was only 10% intact and in 500 pieces. A third reported "Part buried with some disintegration."

CONCLUSIONS AND LESSONS LEARNED:

- Were the results skewed by the fate of the Genesis Mission where the capsule crashed? I think not.
- A number of dowers had difficulty in understanding the coordinate system and clear instructions are

required for any future experimental work.

- It may only be necessary to provide a rudimentary proxy map of Mars with the coordinates marked in, and a few major features. It should of course be clearly titled "A Map of Mars".
- The question has been raised of the need for protection of dowers operating at this distance. I will be considering and discussing this with others and providing it if required.
- Due to my physical incapacity at the time and the layout of the Workshop room I could not adequately supervise the experiment at the back of the lecture room. It appears that one dower was in need of some assistance after leaving the workshop. However my previous experience had showed that when Dowsing or Remote Viewing on the Lunar Surface at a range of 290,000 miles there had not been any problem but, in retrospect, perhaps I should have finished the experiment with a "grounding" exercise. I will do so in the future. As one of the group said "It is a long way back from Mars!" (Possibly around 10 million miles at the time of the experiment).
- It should be borne in mind that in 2004 the recovery of this technology is still in its infancy. There has been little, if any specialised training, although to the Great Seers of Hermopolis who had generations of training it would no doubt have been relatively easy. The ultimate range of Remote Dowsing/Remote Viewing is presently unknown but may be infinite? Perhaps the Mind can go anywhere? To touch the Stars?
- My initial expectations of success were quite low and I was prepared for a failure. However, from the experimental results and the degree of corroboration in the remote viewing of Beagle 2, it would appear that the BSD Dowers who participated in the experimental work did, in fact, visit Mars and observed the location and condition of Beagle 2.

REFERENCES

- (1) "A Programme for the Surface Exploration of the Moon", P. A. E. Stewart "Spaceflight" 3,34, March 1961.
- (2) "Surface Navigation on the Moon", P. A. E. Stewart, Journal of the Interplanetary Society 18, 149 (1961) and "Space Research and Technology", Ed G. V. E. Thompson Gordon and Breach 1962 P.128.
- (3) "Problems and Design of Vehicles for use on the Lunar Surface" P. A. E. Stewart. Paper presented at the Fourth Lunar International Laboratory (LIL) Symposium, Waldorf Astoria, New York 1968. Organized by the International Academy of Astronautics at the 19th International Astronautical Congress, New York, 17. October. 1968. In "Proceedings – Applied Sciences Research and Utilization of Lunar Resources". Ed, Frank J. Malina (International Academy of Astronautics) Pp. 63 - 123. Pergamon Press.
- (4) THE "MARS INSTITUTE" WEBSITE – Contains an account of my lecture to the British Interplanetary Society (See Reference 1) and an illustration of the Trans-lunar Exploration Vehicle. This information can also be accessed on the Web at "Peter A. E. Stewart" and was placed there by David Portree, historian to the Mars Institute (Site updated November 2004).



Jeffrey S. Keep

Auras Revisited – Part 3

02.10 THE AURA'S SOURCE

This section discusses the dowsable structure of any solid source object, and how this relates to the object's aura. It is well known that megaliths consist of 7 horizontal dowsable bands with associated vertical up or down spiral(s). It would seem this structure applies to most solids. This is a different concept and should not be confused with the seven inner ellipsoids and outer spirals comprising the source objects aura.

In order to obtain a sufficiently long source object on which to perform experiments, a bamboo cane of about 1 metre was used. Figure 27 illustrates a typical structure. This comprises 7 bands (marked a-g) of alternate positive and negative possibly electro-magnetic energy, coupled with a different type of field that forms one turn of a spiral along the object's length. In this example, the externally detectable spiral within the source is upwards and anti-clockwise when looking down from the top, and it is assumed that this spiral field returns downwards inside the solid fabric of the source object. The dowsable fields (of the 7 bands and a spiral) are confined closely to the object's surface. Each of the 7 bands only extends to a maximum of about 5mm from the surface, whilst the single spiral does not even extend from the surface.

As always, when interpreting the results of dowsing, vibrations, frequencies and vortices are involved. The 7 bands could be composed of "standing" torroids, conceptually spinning in alternate directions, either clockwise or anti-clockwise around the vertical one-dimensional central axis, and/or up and down around a two-dimensional circular central axis.

As already discussed, a source object deprived of light loses the ellipsoidal part of its aura after a few days but retains its outer spirals. An analogous phenomenon applies to the 7 bands and spiral on the surface of the

source object. When the ellipsoids have vanished, so have the 7 bands. However, like the outer spirals, the surface spiral remains unaffected and intact. This suggests that the 7 bands are closely linked (a) to the 7 aura ellipsoids and (b) to photons and electromagnetic forces. Furthermore, the outer "spider-web" of spirals would seem to be closely linked to the surface spiral on the source object. The latter two phenomenon would seem to be produced by non-electromagnetic forces or fields.

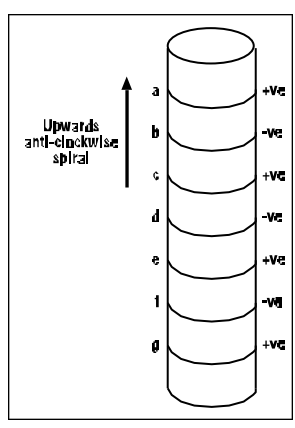


Figure 27 The distribution of dowsable fields over the surface of source objects

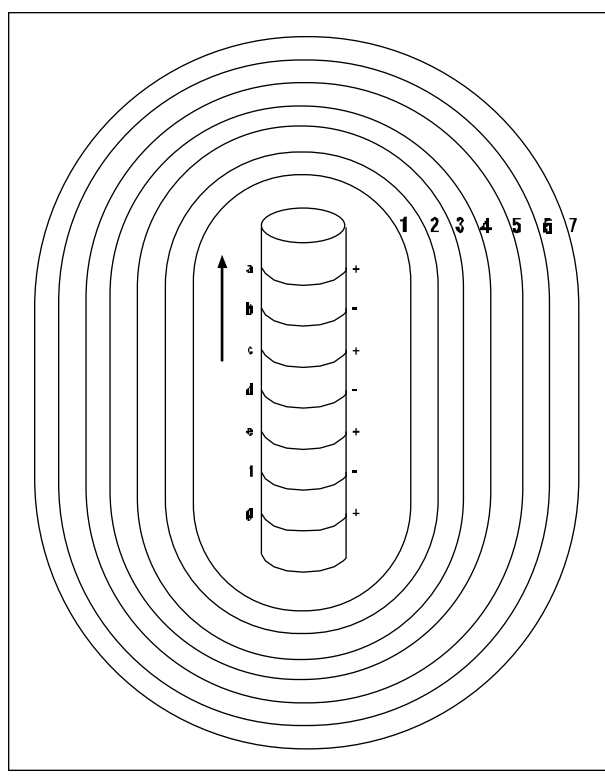


Figure 28 Aura fields and ellipses

Figure 28 shows the 3 - dimensional composition of the 7 ellipsoids of the bamboo cane (it is easy to rotate a bamboo cane to check the 3 dimension structure of the aura). This shows that the centre (foci) of all 7 ellipsoids is at the physical centre of the rod. It is not like Figure 29, which would apply if each of the 7 bands separately produced an aura boundary. Figure 30 gives a relationship between the aura number, 1-7, and the bands, a-g.

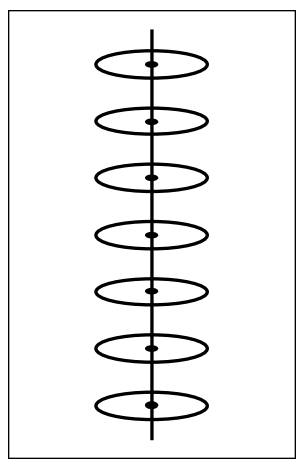


Figure 29 Wrong model for the interaction between source and its aura

Aura Ovoid Number	Source Field Band
1	G
2	F
3	E
4	D
5	C
6	B
7	A

Figure 30 – Relationship between aura fields and source bands

Further proof that this relationship exists is obtained if the cane is turned through 180°, as shown in Figure 31. As expected, the fundamental dowsable structure of the source remains unchanged with the upward anti-clockwise spiral (as illustrated in figure 27) becoming a downward clockwise spiral, with the positive and negative bands remaining the same. The aura relationship is exactly the same as the table in Figure 30.

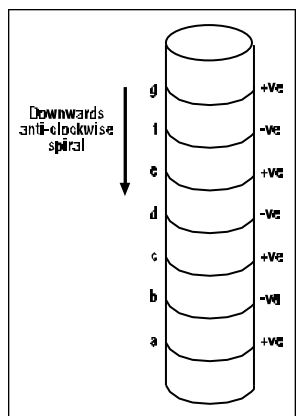


Figure 31 Inverted Source

This demonstrates that successive +ve and -ve bands are not identical fields, but are somehow augmented by an additional field and presumably the single encompassing spiral. A possible clue may be that Aura boundary 1 is associated with band g, which is at the start of the external perceived spiral flow direction, whilst aura boundary 7 is associated with band a, which is at the end of the spiral, before it disappears back into the solid interior of the source object.

3. AURAS OF WATER

The auras associated with water are, in general, the same as for stones and crystals as discussed above.

Auras Revisited – Part 3

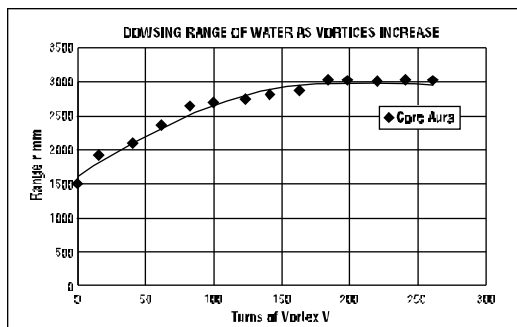


Figure 32 Water Vortices

However, being a liquid, vortices can be created. This results in the aura being more complex. Figure 32 illustrates this and shows that spinning water can double the size of its core aura, in this case from 1.5m asymptotically to 3.0m. Shaking the water in any direction has no effect – only creating vortices does.

4. AURAS OF PLANTS

The auras of plants are similar to solid objects and water as discussed above, with the main additional factor being the size of the aura depends on the size and health of the plant including its dehydration. It is well known that the size of a plant's aura expands significantly if, say, a glass of water is brought close to, but not touching the plant. It is apparent that plants as well as animals can interface with the Information Field.

5. HUMAN AURAS

This section is confined to “scientific” solid three dimensional geometry, not to the higher levels of spiritual or emotional aspects of human thought and behaviour. In general, the auras of humans are the same as solids, crystals, water, and plants as discussed above, plus the following additional factors:-

5.1 HEALTH

All 7 ovoid boundaries become smaller when a person is ill. Similarly the colours and the size of the gaps between the ovoids is relevant. Some people can see colours and patterns between the boundaries, which allegedly relate to the state of health, such as blood pressure, or depression.

The ellipsoids of the normal human aura are concentric to the spine. If someone has had, for example, a car accident or fallen over badly, their aura may become displaced so that it is, say, in front or behind them. The mind can be used to centralise displaced auras.

A person positioned over an Earth Energy Line is another factor affecting the size of a person's aura: detrimental energy may cause an aura to shrink.

5.2 VOLUNTARY

People have conscious control over their auras. For example, someone wishing to become introvert can collapse all 7 of their ovoid fields into a small aura extending over a few feet. However, an extrovert can extend their auras for distances possibly over 100 feet. An example of this is a performer in front of a large audience who can extend the realms of his aura to the back of the auditorium. This is an example of consciousness affecting auras and dowsing.

5.3 CHAKRAS

As explained above in Section 2.10, dowsable bodies seem to have 7 internal fields which are alternatively +ve and -ve. In humans these are referred to as 7 chakras and they are associated with the 7 components of an aura. As mentioned earlier, for inanimate objects, the seven internal bands only extend a few millimetres from their surface. For humans, however, the chakras seem to radiate outwards in a conical shape, which can be influenced by consciousness

and intent. For example, the angle of divergence and distance of detection and influence can be readily changed by differing emotions. The shape of chakra “radiation” can simply be drawn by placing a vertical 2-D surface so that it is on a radius to the spine, and using a pen as a pointer, dowsing the shape of each chakra field.

Figure 33 illustrates the connection between the chakra and the aura number (or etheric body). As a cross-check, a search of the traditional spiritual orientated literature relating to chakra and aura colour confirms Figure 33. The colour connection between chakras and auras is very subjective, variable, and may only be relevant to a “normal healthy person”. It is therefore surprising to a sceptical scientist that all the literature refers to identical chakra colours, which may simply imply that everyone is copying the same source texts! Although the author obtains different colours when dowsing, the connection between chakra name and aura number is the same. Moreover, assuming a vortex flow, the dowsable field around the outside of the spine is upwards, and by inference downwards inside the spine, making Figure 30 compatible with Figure 33. This is further supported by the fact that the colour of the chakra matches the colour of the associated aura field.

It is a sobering thought, subject to the above qualifications, that the basic structure of the human aura and chakras are no different in principle from, say, a bamboo cane! However, unlike inanimate objects, humans, for example, possess consciousness; and intent that enables them to alter their own and other peoples' auras and chakras.

Chakra Name	Chakra Colour	Aura No.	Aura Colour
Crown	Mauve/Indigo	7	Violet
Brow	Dark Blue/Violet	6	Dark blue/Violet
Throat	Blue	5	Blue
Heart	Green	4	Yellow-Dark blue
Solar Plexus	Yellow	3	Yellow
Sacral	Orange	2	Orange
Base	Red	1 Core	Red-Yellow

Fig. 33 – the connection between chakras and auras

6 CONCLUSION

Nature seems to have created auras that comprise three differing component fields that involve spin, frequencies, and vortices.

- (1) The source object itself is covered by 7 internal bands linked with a spiral having a differing form of vibrational energy.
- (2) The middle part manifests itself as seven concentric approximate ellipsoids, the shapes and sizes of which can readily be changed by both the source object itself and its environment.
- (3) An outer pattern of vortices is based on six arms which appear to be extending from the centre of the source to infinity.

Fields 1 and 2 involving 7 components are fundamentally affected by light, but the spirals in fields 1 and 3 are not. By varying the separation of two similar bodies, and measuring the effect of this on the spirals (in fields 3 above), a useful demonstration is obtained that information may be stored in the Information Field via phase interference. Moreover, what we perceive at the

Auras Revisited – Part 3

macro-level is similar to that at the micro or quantum level. A modern version of “as below so above”.

The entire complex three-dimensional geometrical patterns of auras further demonstrate that intuition may be wrong, as source objects are not necessarily “radiating” dowsable energy. This is apparent because there is no inverse square law being obeyed (whereby the strength of the dowsing reactions reduces the further the dowser is away from the source object), and an infinite number of spirals cannot be produced by an infinite amount of radiating energy. Hence the aura pattern perceived by the brain may be produced as a result of four steps.

- (i) The process is started by the fields within the source object producing the 7 internal +ve and –ve bands and a spiral (chakras).
- (ii) These interact with the all embracing Information Field by involving a phase interference process which stores the relevant information. It makes no difference if the sources are megaliths, bamboo canes, columns, arches, water, or life forms, etc.
- (iii) At the quantum level, via fine frequency selection, the brain, by means of intent, “tunes” into the relevant

object, or question, and thus interacts with the relevant part of the Information Field (see reference 3).

- (iv) An infinite hologram is then perceived by the brain. The core aura is a partial representation of the physical source object. The rest of the aura is “all in the mind”.

REFERENCES:

1. Measuring Range Page 3 - BSD Journal – Vol 39 – No 273 – September 2001.
2. Field Strength Page 8 – EEG Newsletter – Vol 6 – Issue 22 – June 2001.
3. Mind Created Fields Page 7 – EEG Newsletter – Vol 8 – Issue 29 – March 2003.

ACKNOWLEDGEMENTS

Thanks are due, in general, to The Wessex Dowzers, The British Society of Dowzers, the Dowsing Research Group, and the BSD Earth Energies Group all of whom have helped in opening up the mind of the author to the importance, extensive scope, and power of dowsing and its many facets. In particular, several members of the Dowsing Research Group have helped the author verify some of the findings in this article.



Obituaries and Tributes

Reg Burgess – a Tribute by Wessex Dowzers

Way back in 1986 the only south coast dowsing groups were at Brighton and Bristol, with nothing in this area. A few BSD members had started to meet quarterly that spring, as Dorset Dowzers, but nothing on a more frequent basis. In 1986 Reg and Chris Burgess, who had been members of Bristol Dowzers, moved to Wareham and decided to take a “leap of faith”. In October they hired a hall, put up notices about a dowsing meeting and waited! Thirty-two people turned up, all non-dowzers, who wanted to find out more. So Wessex Dowzers was born. Reg spared no effort in making the group a success whilst Chris took on financial and secretarial duties. When one starts, finances are limited and a lot of organisation and tuition falls onto the shoulders of those few early committee members.

Reg had a wonderful ability to teach and inspire confidence in pupils, no doubt due to his wartime experiences as a flying instructor. He was a very accomplished dowser and in a wonderfully quiet way he would encourage pupils to find their own way of dowsing. He often said, “I wish we had a video recording of the expressions on peoples faces when they suddenly find that they can do it.”

The following year Dorset Dowzers merged with Wessex Dowzers to form a larger group. Field days and site visits

followed and then Reg suggested “should we have a one day seminar?” This we did with the last lecture being given by Hamish Miller. Thanks to Reg’s ideas and suggestions, as finances improved so one was able to attract speakers of repute.

About this time other dowsing groups were starting up and at least two committee members were encouraged to pass on their experiences, expertise and help. Since then Wessex Dowzers has gone from strength to strength and in 1996 the BSD President of the time – Major-General Bill Cooper – joined us for a 10th anniversary party – specially designed cake and all!

Following Reg’s initial years as Chairman, I took over that post and in appreciation of his work we were most pleased when he agreed to become the President of Wessex Dowzers. Over the years Reg had been a great inspiration, not only to the Committee but also to the members. He always had a smile on his face and so it was a sad day when he passed away last year after a long illness. Not having a President left a void, so it was that at our December meeting we made Chris Burgess our President in recognition of the work that she and Reg had done. Wessex Dowzers will always be grateful to Reg and Chris for that “leap of faith” and the success which followed.

Bob Sephton, January 2005

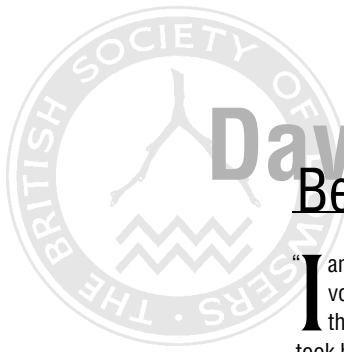
Peter Watson – South Herefordshire Dowzers

Peter Watson formed South Herefordshire Dowzers in 1997 and within two years the group had attracted 60 members from this large rural area. Since these early days the Group has gone from strength to strength and has consistently presented a full schedule of meetings and trips.

Peter had also spoken at Congress and to several other

Local Dowsing Groups. His inspirational leadership created a caring, supportive and fun loving group which has provided an ideal environment for budding dowzers.

Peter died in November after a long illness and will be greatly missed by all who knew him. Our condolences go to his wife, Margaret and family.



David Cowan

Beautiful Hills – Bad Vibrations

I am having problems in my house,” said the anxious voice over the telephone: “My wife and I are both ill and there are paranormal phenomena here as well!” As I took his name and address something clicked at the back of my mind. A quick look at my O.S. map verified my intuition – his house was situated at the very edge of a ‘pluton’.

About 408 million years ago a sub surface extrusion of lava, four miles by six across, occurred here, a mile to the north-east of the village of Comrie in Perthshire, commonly

known as the “earthquake village”. Many ice ages later and eons of weathering has left a roughly oval-shaped number of hills over 2000 feet high, now worn into glaciated and water-worn valleys.

As I drove up the single track road of this beautiful glen I looked across to the heather and bracken-clad hills, bright orange in the low sun with a late mist scudding around their slopes, I couldn’t help but admire their immense beauty – but was this beauty hiding a dark secret?

James was waiting outside his isolated cottage as I stopped outside. He

introduced me to his wife and their baby and showed me around the house. As usual, I started to check their beds with my angle rods, where I find that problems of ill-health often occur. One black line, 4 inches wide, came vertically upwards from the ground, and crossed their double bed at his chest, turning at an angle of about 90 degrees at the chest of his wife and then up her spine and her head – very nasty. These black lines always induce overlapping spirals of black telluric energy down their length and one such spiral was centred on his wife’s chest. Black spirals also attract ‘overgrounds’ from standing stones (see Figure 1), stone circles, quarries and other volcanic and man-made anomalies into their centres - always attracting the black or unhealthy waves, while healthy or white spirals attract only white healthy energies.

She had several problems with her health, and now, like any other person sleeping on a geopathically stressed area, awoke every morning feeling desperately tired, and in this case extremely hostile towards her husband. He, also in a stressed area of the bed, awoke tired, and a feeling there was something ‘not quite right’ about the house. The baby had been put in his cot in an associated black spiral and was very fractious and unhealthy until, on my advice over the telephone, the father shifted the child’s cot around the house until he found a place where baby seemed happier.

GHOSTLY CHILDREN’S VOICES

Another unusual occurrence was the sounds of children’s voices in the narrow hall. I found another black line here, with its black spiral, just where they heard the voices, while the line curved round into a cupboard, and into a copper water tank. Could these black lines and spirals carry sounds of children playing some distance – perhaps miles – away, and amplify them via the water tank? Telephoning a friend, one of the few female ministers in the Church, I was a bit surprised when she told me that the inmates of Perth prison where she is chaplain, sometimes communicate with each other from the seclusion of their cells by speaking down the water pipes! A neat theory, but unfortunately the couple could also hear the voices in a small bedroom without water pipes, so this idea was quashed. It may be a coincidence, but this house was originally a small school. Could the voices be a stone recording, perhaps, or, more likely, according to my co-author Anne Silk, the human brain being tricked by EM Fields into hearing things which are not there?

My psychic friend who later investigated the house believes that there are spirits of four children here, as she could visualise them standing in the small back bedroom, apparently wearing old-fashioned smocks, all dying suddenly about the same time. There was also an old man with whiskers, called George, wearing old-fashioned clothes who, she thought, was a shepherd who had been killed in a fall in the hills.

OPENING DOORS

James also told me that the door of the bedroom had been seen several times to open apparently on its own. This, I mused, could be caused by the movement of plate tectonics. Loch Tay, 20 miles long, and just seven miles to the north had a similar problem. In 1784 a blacksmith from

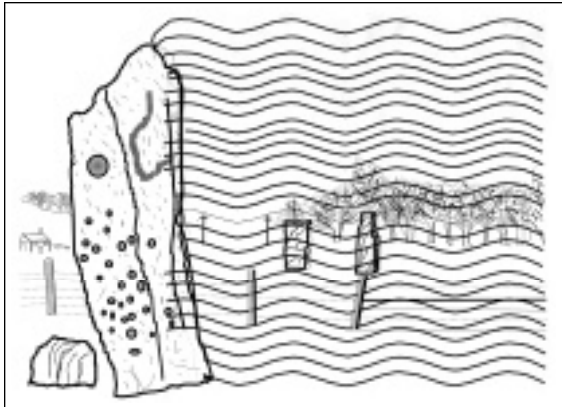


Figure 1. This cup-marked standing stone at Kilmartin, Argyll, shows just one of the many ‘overgrounds’ it emits. The waves are normally very coherent and run neatly across the country side by side. They form a wide stream of energy (an energy ley) and are healthy as they leave the stone but can be altered to unhealthy when they pass through areas of putrefaction, like dirty canals, burial-grounds, etc.

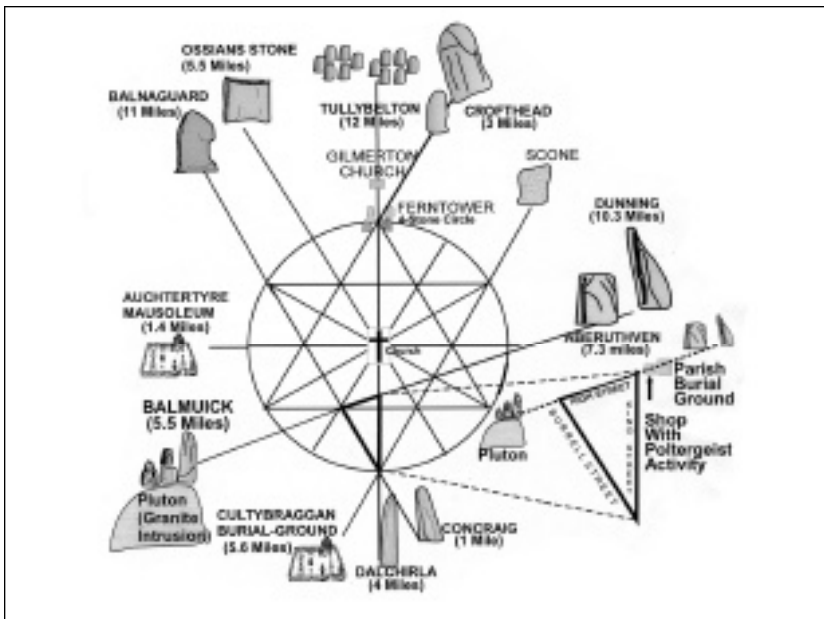


Figure 2. Crieff is an ancient geomantically designed town with its streets and ancient churches deliberately designed as a six-pointed star. The triangle at bottom right is extrapolated from the pattern and is composed of the three main streets in Crieff which are aligned to standing stones and circles. Notice how the energy ley from the volcanic pluton passes up the High Street, through the City Prices shop, on through the burial-ground at the rear and further on to two standing stones. The cross in the centre is the geomantic centre of the town, originally an ancient burial-ground, now a modern church.

Beautiful Hills – Bad Vibrations



Figure 3. The remains of a four-stone circle on the top of a hill on the Comrie Pluton

the nearby village of Kenmore was washing early one morning on the shores of this loch. To his amazement, he suddenly saw the waters of the loch receding some 300 feet, forming a 4 ft high foaming wave which left the bed of the loch dry, and then washed away to the west. Running into the village he warned other residents of this event. When they investigated this phenomena

they discovered that the river Tay, one of the largest in the country, had reversed direction and was now flowing back into the loch. Several days later there was a similar but opposite event, when both loch and river returned to normal. A fault runs across this loch at the west end, and a plate of land had settled down. That is the simplest theory, but – and it must be a coincidence – there is also another story of doors opening on an energy ley initiated from this pluton.

STONE CIRCLE ON SUMMIT OF PLUTON

Some twenty years ago I followed a straight energy ley from nearby Crieff, where I live, seven miles to the east of Comrie. I found this travelled up the High Street of Crieff, and on through a small shop which has had a poltergeist spanning over 40 years, sometimes opening the heavy

door, on through two ancient burial-grounds and further on to a standing stone at Aberuthven, some seven miles away, and yet another at Dunning, three miles further on. (Figure 2). (I am presently researching the spirit energies which are associated with this poltergeist shop and its nearby burial-ground. See next issue). As I followed this ley to its source, westwards down Crieff High Street, (BSD Magazine Vol. 40, No. 280), I thought I was going to have a long and difficult

walk across the hills to a stone circle at Killin, some twenty miles away, which seemed to be the source of this energy ley. Much to my relief, after only a five mile walk (and another five back to my car), across the hills, I found myself approaching the top of a hill on the Comrie pluton. To my surprise, at the summit of one of the 2,000ft hills, my divining rod led me unerringly to the centre of a standing stone I certainly did not know about – not to one side of the stone or the other – it went into the stone dead centre.

This is actually the remains of a 4-stone circle and is called Balmuick (Figure 3), not marked on the O.S. map at

that time, and was destroyed presumably by one of the many earth tremors Comrie has suffered in the past – an eight-foot high standing stone is lying here in three pieces. The black lines around this pluton were, I discovered, wandering around at random, close together, and were very unhealthy, but the one standing stone still in place acted almost like a prism, picking up the unhealthy subterranean energies and directing a wide energy ley through Crieff. This energy ley (presumably because it had been cleaned up by the quartz in the stone) was healthy, at least to begin with, until it passed through any area of decay or putrefaction, where it turns into an unhealthy energy ley.

USING A CUP-MARKED STONE TO ELIMINATE UNHEALTHY ENERGIES

Jimmy's house had so many black overgrounds running through it from various sources that I had to put my special cup-marked stone outside to divert them around it, which worked perfectly (see my book, co-authored by Anne Silk, "*Ley Lines and Earth Energies*"). The black lines coming up from below ground, which the cup-marked stone cannot affect, were then earthed by 4 inch wide cast iron roof downpipes cut into two foot lengths and hammered into the ground where the lines entered and left the property. This neatly warped the energy under the house.

When I left I tried to find where all these unhealthy energies were coming from. Looking at the area behind the house it was obvious that it sat close to the edge of the pluton, several thousand feet deep of diorite with a core of granite, resting uneasily on top of a bed of schistose grits, (Geology of Strathearn, Alan Dempster, 1998). There were many black lines, spiralling further and further out from the centre of this mass, each coil about 1 mm apart – decidedly unhealthy. There were also black lines running outwards radially, like the spokes of a bicycle wheel, adding to the general melee of tightly packed unhealthy energies.

I can understand that a huge mass of diorite with its granite core wobbling like a jelly (in geological terms!) on top of a bed of schistose grits could cause earthquakes, and emitting black energies which cause ill-health, but is it possible that these primal energies can also attract spirits into their black vortices, or can the spirals simply trap them as a form of tape recording, or do they deceive the brain into hearing things?

WHAT ARE EARTH ENERGIES?

There have been many theories regarding the origins of Earth Energies. From slow moving neutrons emitted from the Earth's core to the difference between the negatively charged Earth and the positively charged ionosphere, and positive (unhealthy) and negative (healthy) ions released by the immense pressure of rocks, to my favourite, the Spin Torsion Field Effect recently discovered by Professor Reddish, one time Astronomer Royal of Edinburgh and dowser (I find that using my angle rods around my washing machine at full spin gives a working idea of this field. Switch the machine off to avoid extraneous EM Fields and try as it runs down). (Focus Magazine #140, July, 2004 "*What lies beneath*" by John Gribbin). Certainly, it would appear from the example of energies from this pluton, that



Figure 4. The cup-marked boulder on the roof of this souterrain is under great pressure and stress. This underground earth house is a labyrinthine tunnel shaped not unlike the human ear. The inner tunnel is shown behind the author, bottom right. Another cup-marked stone guards the entrance.

Beautiful Hills – Bad Vibrations



Figure 5. A rocking stone near Comrie. In the past this logan stone could rock in a high wind. The stone-age culture seemed to make a lot of use of stone under pressure.



Figure 6. Cup-marked rock at Ormaig, Argyll. Compressing rock in various ways, here by hammering, seems to have effects not yet known to science. The energies from the petroglyphs on this outcrop can still be found, even several thousands of years after they were pecked into the surface.

some of them at least may well be simply rock under pressure, with the energies escaping to the surface via fissures, faults and joints. There have been a number of experiments crushing granite for instance, and small balls of light have been seen moving along fractures on the specimen under stress, and I have discovered that placing a clear quartz crystal under pressure in a small joiner's C or G clamp

on top of a standing stone causes a 20 mile-long energy ley to be amplified by a factor of two down its length. (Remember to remove after conducting any experiments).

What has become clear, thanks to the local geologist's map of this highly faulted area on the Highland Boundary Fault, is that almost all of the stone circles, all of the cup-marked stones, some castles and many old burial-grounds are placed directly above geological faults and dykes. It is obvious that they use these strange subterranean energies to power the energy ley system. Standing stones are an exception – they are placed above crossing underground

streams or fissures and act as boosters to the ley stream.

ROCKS UNDER PRESSURE

Rock under stress seems to be a recurring feature of Earth energies. Perhaps that is one reason why Megalithic man built structures like Stonehenge with its huge capping stones, dolmens, (upright stones with a heavy capping stone as a roof), souterrains (earth houses)

with cup-marked heavy roofing slabs, (Figure 4), and the "top knots" on the Easter Island statues, as well as rocking stones (Figure 5).

Percussing cup and ring marks (petroglyphs) on rocks, cliff faces and boulder, like this fine example at Ormaig, Argyll (Figure 6), may have a similar effect, lasting for thousands of years. Certainly, as I have already mentioned, hammering a cup-mark into a boulder (the energy from the boulder travels into the Sun at the time of carving, possibly because of the Spin Torsion Field Effect), and placing it correctly outside a house is very effective in eliminating some types of black Earth energies. Note also that Alanna Moore uses crushed magnetic and diamagnetic rock in her agricultural towers. (*E.E.G. Magazine, Vol. 32, December, 2003*).

COMRIE EARTHQUAKES

Earthquakes have often been associated with strange lights, and Comrie has seen this phenomena in the past. There are six earthquake epicentres around and quite close

to this village. In 1842 appearances of fire and light were seen well before daybreak, with a light so brilliant that birds could be seen in the trees, although there is no indication of where the lights originated. There have been other strange effects as well, and it is odd that they all happen in one small area:

From the Rev. Maxton ten miles from Comrie in the early 19th century: "rattling sounds were heard in the sky, preceding the shock that was felt."

Someone who lived seven miles from Comrie is quoted, "In every case, I am inclined to say that the sound proceeded not from underground. The sound seemed high in the air," (granite passes sound much faster and easier than air – 20,000 ft/sec in unfractured granite, 1129 ft per second in air – and I believe that the sounds of the pluton moving were carried via the granite core into the air).

1788, 11th November: there were 21 tremors on that one day.

1816 on August 13: a luminous object, or a "small meteor", was seen at Dunkeld, 20 miles from Comrie; and, according to David Milne, (*Edin. New Phil. Jour., 31-110*), a resident of Comrie had reported "a large luminous body, bent like a crescent, which stretched itself over the heavens."

1839: an earthquake at Comrie. According to the Rev. M. Walker of Comrie: the sky at the time was "peculiarly strange and alarming, and appeared to be hung with sackcloth."

1839-1841: 247 occurrences "Like a persistent bombardment, and the frequent fall from the sky of the debris of explosions." (*Edinburgh New Phil. Journal 35-148*).

1839: "Something had occurred in the sky, because sounds seemed to come from the sky. Clothes, bleaching upon the grass, were entirely covered with black particles which presumably had fallen from the sky." (*David Milne*).

1841: a shock and fall of discoloured rain at Comrie (*Edinburgh New Phil. Journal*). (Discoloured rain can be caused by anything from insect faeces to distant volcanoes and forest fires).

1854: throughout October, shocks were felt at Comrie, sometimes slight, sometimes severe, "like the distant thunder or the reports of artillery. The noise seemed to be high in the air and was often heard without any sensible shock." (*Mallet's Catalog Report B.A., 1854-290*).

1855, April 23: a young woman in the home of Sir William Murray, Auchtertyre House, 5 miles from Comrie, found a lump of black slag after she saw a luminous object falling. When she picked it up she had to drop it as it was hot. (*American Journal of Science, 2-28-275*).

LONG LEGGITY BEASTIES

When I first met the couple on the Comrie pluton, they were upset and frightened of all the ghosties, ghoulies and long leggity beasties which they seemed to have in their house. Now, as I left, they were much happier and contented, even although I had only solved part of the problem. As I drove back down the narrow, unfenced and winding road, avoiding wandering cattle and the occasional low flying pheasant and looked across at the beautiful sunlit hills I thought to myself how unfortunate to live in such a

Beautiful Hills – Bad Vibrations

magnificent setting which is so deadly to our health! Now, however, their house has been “cloaked”, (like a Klingon warship!) thanks to my cup-marked stone, and hopefully, they can now live in peace and health.

Several weeks later James telephoned me to say that both he and his wife feel better, but the unusual phenomena were still occurring. The children’s voices can still be heard, and one of a pair of trainer shoes was seen to move a short distance across the carpet on its own. They have since moved home and have had no further problems.

A HOUSE BUILT ON CLAY

Another house I have since checked was at South Queensferry, to the north of Edinburgh. This house is situated high on the banks of the river Forth, between the Forth Rail Bridge and Road Bridge – especially at night it is a startlingly beautiful and dynamic view to say the least. The wife in this case also had a black spiral at her chest in bed, although she claimed that her only problem was extreme tiredness in the morning. Since these black spirals suck the energy out of a person and dump it into the ground I wasn’t surprised, but felt that a more serious illness was almost inevitable. The husband also awoke extremely tired (diagnosed as Post Viral Fatigue Syndrome) and also suffered from osteoporosis. There was a black line running across his neck, which must have played a part in at least his P.V.F.S. If not the brittle bone disease.

Their house had been built on a band of clay, the first I have encountered, as it happens, and the “overgrounds” were black, very unhealthy and, presumably because of the clay, were running in an unusually haphazard fashion instead of the strict regimented waves shown in Fig. 1 which is normally the case. Once again, a cup-marked stone proved effective in eliminating these.

RADIATION FROM H.T. UNDERGROUND CABLES

Not all Geopathic Stress is caused by geological fissures and anomalies. Running a few feet from the side of my first floor flat is a high tension cable coming from a sub-station some 30 yards away. At right angles to this cable are vertical “loops” of black energy, about 1 foot wide, which travel some twelve yards on either side, and about 4 yards apart. Several of these loops terminates in my bedroom and have proved very difficult to deal with, as my cup-marked stone has no effect on these. I tried spirals of fence wire, which were initially effective, but failed after a few days, when I had to put a new spiral touching the original one. After a few days the black line seemed to charge this spiral up as well, warping itself around its edge, until I ended up with six overlapping spirals touching each other all round one side of the bed.

Every time my protective spirals failed, I would wake up early in the morning feeling very nauseous, and had to think of a new way of dealing with this problem. Shifting

the bed around the small bedroom seemed to have little effect as the black line kept tuning into the spring mattress. A bucket of salt water placed on the incoming line effectively stopped it from getting to my bed, but again, the small quantity of water seemed to be charged up within a few days when it had to be refilled. Fortunately, the line also goes through my bathroom, and by chance, my bath. Earthing a chain by clamping it to the cold water pipe and leaving it in

the bath filled with water and buying a foam filled mattress means I can now sleep in peace – I am eternally grateful that my life has chosen this path of investigating Earth energies as I am sure I would have serious health problems if I hadn’t.

It is now almost thirty years since I started on this voyage into investigating Earth energies. These particular cases showed me that electrical supplies can cause nasty effects, but it is also the emissions from the planet which can be of the greatest importance in understanding problems with ill-health and “paranormal” phenomena.

TETRA AND MOBILE TELEPHONE AERIALS

There has been much speculation recently on the subject of ill-health from microwave aerials, and, especially in my area, of the police Tetra masts running at 17.6 Hertz, very close to the human brain frequency. On the summit of a hill I tuned into one such mast, and, as I suspected, found that the individual waves do not radiate outwards in straight lines – they tune into black spirals as they propagate outwards. All of the waves are unhealthy, unlike electricity sub-stations and other transformers, and many hundreds, perhaps thousands of these waves, upon touching a black spiral from an underground stream or fissure, automatically radiate into the centre, giving an extremely powerful focus.

As I have stated several times before in articles and books, the more electricity we use the more powerful and lethal these black spirals become, especially if you are unfortunate to have one in your bed. It is probably too late to do much about microwave communication masts now – the genie is well and truly out of the bottle – but it may be possible for a dowser/scientist to find a solution. I have tried crystals pulsed by a signal generator which eliminates ordinary black spirals, but have not yet tried to find if it

works with other unhealthy energies.

What is so very strange about these radiated waves is that even when the masts are not powered the waves can still be found! Use one angle rod and try to find any one wave from your microwave oven and you will find this for yourself. It is as if an imprint (remanence) is left when the mast or oven is switched off.

...a trainer shoe moved across the carpet on its own

..Police Tetra masts running ... very close to the human brain frequency

David’s recent book, “Ley Lines and Earth Energies”, originally “Ancient Energies of the Earth” has been updated and is co-authored by Anne Silk and published in the USA. Available on special offer from BSD Bookshop – see page 19 for details.



John Bradley

Dowsing, Health and Nutrition – Part 1

INTRODUCTION

This article discusses some of my dowsing experiences in the area of health and nutrition. It is in two parts, the second one being presented in the next issue of Dowsing Today. To begin, I will explain how I became intrigued by dowsing some 13 years ago.

In 1991 I was diagnosed with M.E. It appeared very suddenly following a seemingly 'routine' viral infection. Despite the best efforts of doctors and homeopaths I was still totally unable to function after 18 months and showed no sign of improvement.

At this point my experienced homeopath made the suggestion that eventually changed my life. "I think you should go and see this dowser." I had no idea what a dowser did, though vague recollections related to finding water did exist. She then told me that he didn't dowse for water, he dowsed people to see what was wrong with them. I asked the obvious, "How does he do that?" but was totally unprepared for the answer, "With a pendulum." Frankly, I thought she had lost the plot and I told her so. I refused point blank and we carried on as usual.

Three months later, I was still in a terrible state with no prospect of working. Reluctantly, I agreed to visit the dowser. You have to see this from my perspective at the time. My whole life had been spent in science and engineering, much of it in research. I had been a consultant to major companies, technical manager of computer manufacturers and so on. The idea of a man with a pendulum making me well seemed ridiculous and when I had broached the idea to visiting colleagues they all agreed. No doubt you can guess what happened. This frail old man that I met turned my life around in less than a month. He subsequently worked miracles on my friends and members of my family.

Despite the constant ridicule of colleagues, I was totally captivated by this. Nothing could take away the experiences I now had. I visited him regularly, often trying to catch him out (no luck). I paid out lots of money for tests in laboratories to see if they confirmed any of his opinions (they did). Whatever the ridicule, I knew that I was experiencing something very important.

The dowser became a lifeline and I also became aware of the many serious cases he was dealing with. People would fly in from thousands of miles away just to see him. And then the unthinkable happened. He died under anaesthetic during an operation to fix a long term problem.

GETTING STARTED

At this point I was absolutely devastated. I had previously tried to find other people who could dowse in this special way (just in case), but I couldn't. The dowser didn't know anyone either.

I had no real idea how he worked – he never discussed it. It clearly involved a pendulum and using various scales/charts, but that was all I knew. He would prescribe all manner of nutrients like vitamins, minerals, amino acids, enzymes etc. and you would invariably get better.

Whatever, I decided at that point that I would learn to dowse, I would develop my own methods and I would eventually help other people if I could actually get anywhere with it. And so began a very long journey that continues to

this day.

I read everything I could find, often bought in the type of shops I had no desire to visit. I read all sorts of things I would never dream of reading normally, but nothing related directly to what I had experienced. It did however convey some basic ideas, though it took me ages to generate the most basic of pendulum responses for myself. An analytical mind is great once you can dowse but it makes it very difficult to get started.

Once I had basic responses I started asking questions and invariably got all the wrong answers. It was extremely frustrating and not helped by the fact that just about everyone around me thought I was crackers. Most of them are now enthusiastic clients! If you are a newcomer to dowsing I can only suggest that perseverance is the key, driven by some form of blind faith. Although I constantly got incorrect answers, my previous experience had demonstrated quite clearly that it was also possible to get the right answers.

A couple of years elapsed before I got anything remotely reliable happening. Another 4 or 5 years went by studying various issues, evolving techniques and attempting to deal with simple problems within the family. Then one day a friend who had some serious health problems asked if I would try and help him. I did and it changed his life. From there on, it was obvious that I was developing something useful.

NUTRITIONAL DOWSING

Apart from being on the Professional Register of this Society, I do not promote what I do in any way. Everyone I see is a referral from another practitioner (notably homeopaths) or previous clients. Even so, it is sometimes difficult to deal with everyone.

The essence of what I do is as follows. Referred clients are told to tell me nothing except their name and contact details initially. This intrigues them but I find that having a complete lack of information excludes a lot of preconceptions. For example, if someone says, "I suffer from migraines" then there are many dangers for me. Firstly, the diagnosis may be false (and often proves to be so). Secondly, if I am dowsing for something that relates to migraine then I am doing so with the conscious expectation that migraine is a problem. It's not good for neutrality.

Normally, the first thing I do is to dowse their age. If I get within a year or so I feel I have locked onto them and they are instantly intrigued. If I am a long way off it raises lots of issues. In one case I was 12 years out and subsequently discovered that the woman concerned had been pronounced dead around that time! She later recovered from the brain tumour involved.

I then dowse through a basic list of 142 things. Of these, 96 are specific nutrients in various areas of the body, e.g. calcium in bone. The rest are indicators I have derived. These indicators may also generate the need to look at food intolerances and geopathic stress separately.

The majority of items are dowsed to a level on a semicircular scale. I use half a dozen different scales on a regular basis. Whenever possible, I avoid a simple yes/no answer. Although this is the essence of basic dowsing I find it creates far more mental tension than seeking some

Dowsing, Health and Nutrition – Part 1

arbitrary value on a scale. Obviously, the scale reading can be interpreted as good or bad but I find the process more neutral.

For the same reason, I never dowse for a specific illness. It is too emotional and you can get into serious trouble. What if you are wrong? There are all sorts of negative issues. What are you going to say to the person concerned in response to such questions? In my opinion, doctors often underestimate the psychological effect of making a statement to a patient. Something like "I think you have cancer" (say) is an absolute no-no as far as I am concerned.

In any event, a diagnosis is often little more than a name, even in medicine. The name may have serious psychological significance, but often it is not the actual problem itself. I am more interested in the root causes than the name given to the symptoms.

In my engineering background, I have often had to analyse very complex systems. In such cases, you try to seek the simplest 'model' that will give realistic results. I have adopted a similar approach to the body.

The human body is the most complex system we know. With billions of cells and distributed intelligence you are never going to tackle it in the way it deserves. The body has the most remarkable healing and problem solving mechanisms known to man, but this all goes to waste if it does not have access to suitable resources or is polluted by various toxins.

Resources, in the form of nutrients, I call the 'toolkit'. Toxins are just that, things like heavy metals, damaging chemicals etc. The basic aim of my dowsing is to check the toolkit is full of tools, detect the presence of toxins, excesses of certain nutrients, intolerances etc. Various indicators identify key problem areas and action is taken on the basis of what I find.

The result of this never ceases to amaze me. Obviously, there is no such thing as a 'cure all' but I am staggered by the diverse range of problems that seem to respond. Many are very serious illnesses that have failed to respond to all manner of treatments, both conventional and otherwise.

Despite the apparent success, I never make any claims for what I do or any promises. I only direct people to other clients who explain what happened to them. The results are of course anecdotal, but the more you see the more you begin to realise that something important is going on. Here are some examples.

CASE HISTORIES

In all the following cases I have changed the client's name. However, all concerned would be willing to share their experience with serious researchers if contacted through me. Unless otherwise stated, you may assume that I knew nothing about the person when I dowsed them initially.

IAN

Ian was a referral from a homeopath. He is a middle aged university lecturer and management consultant. Ian presented a complex picture with deficiencies of 22 different nutrients. There were several nutrient excesses and numerous indicators suggested serious problems with

his digestive system. There was considerable evidence of tissue repair (ammonia in blood, glutamine in blood etc.) so I suggested that he had digestive problems and injury or tissue damage somewhere.

Ian then explained that he had ulcerative colitis. It was very serious. He had been treated by doctors/consultants for many years without success and had been told he must have his bowel removed as soon as possible. He had reacted badly to some of the drugs and had gone into a coma more than once. In desperation he had gone to the homeopath but she hadn't been able to help him and referred him to me.

Ian's life was transformed in a matter of weeks. One year on he has a personal trainer, is fitter than he has ever been and has an allotment to help ensure his food quality. He has had two short term relapses of a few days, one when he drank a whole bottle of wine and one when he took a cough medicine that caused problems. Lessons learnt!

This has been a life changing experience for Ian and he attempted to discuss his experience with his doctors. Sadly, the reaction was very familiar. "I'm glad you are so well, but frankly I don't want to know" is how it was put to me.

JANE

Jane was a referral from a homeopath. Jane is herself a homeopath. I dowsed her and she presented a healthy picture apart from a couple of nutrients and severe geopathic stress. I suggested that she might have varied problems and asked about her sleep.

She explained that she couldn't sleep and suffered major headaches on an almost daily basis. Doctors and homeopaths had failed to help over many years. I dowsed her bedroom from a drawing and she was sleeping directly in a GS line. I subsequently muscle tested her in the bedroom to demonstrate this to her.

Moving the bed and replenishing the nutrients cured her problems until she went to stay at her mother's in Italy for several weeks. Subsequent tests showed she was again in a GS field and the problem was quickly resolved.

PETER

Peter was referred by a friend who unfortunately said to me, "He has had terrible migraines, 3 or 4 a day, for over 8 years. The family's life is a misery." Thus I knew the apparent problem in advance.

Peter turned up and within minutes said he felt an attack coming on, could he get his 'stuff'. He then returned from his car with a 1 metre high oxygen bottle plus face-mask and a pile of drugs. I had never seen anything like it before. He was on a mixture of four different migraine/painkilling drugs and had been for years. Having taken in oxygen and several pills we were able to continue. Given what I had been told, I dowsed through my list of headache origins. There are 17 in my list and I didn't know what to think when I got a firm No on migraine. Instead I had Yes responses to toxic, infective, hypoglycaemic and candida origins. He was also deficient in 23 nutrients and had appalling gut chemistry.

Peter purchased what I suggested and a week after starting he had a day without a headache. Within a month he had lost over a stone in weight and the headaches were

Dowsing, Health and Nutrition – Part 1

almost gone. It is now 2 years since I first saw Peter and he rarely gets a headache, typically once every two or three months if he doesn't watch what he drinks at the pub! A case of medical misdiagnosis I'm afraid.

PATRICK

Patrick is in his early sixties. We used to camp at his farm in Cornwall in the late 1980's and called to see him early in 2004. Patrick was ill so before he could explain all the details I offered to dowse him. He presented 17 nutrient deficiencies, very low readings in relation to lung oxygen exchange, cardiovascular function and blood purity. There were also some geopathic stress issues.

Patrick then explained that he had been ill for a long time with a blood problem. His white blood cells were dying off almost as soon as they were formed. He had been given two lumbar punctures in an attempt to find a cause but doctors remained baffled. He had to inject himself every day and have weekly checks on his blood condition but his overall condition was getting worse.

I prescribed the necessary supplements and after a few weeks I got a phone call to say that his test figures were suddenly changing, to the point where his doctors had suspected problems with their instrumentation. Within two months all tests were showing normal and the need to inject had ceased. Patrick has remained well for six months and no longer needs the drugs. Like Bob, he attempted to discuss his experience with his doctors but they didn't want to know about it.

RACER AND SUSAN

I am using 'Racer' as a pseudonym for a well known sportsman competing in Grand Prix. Susan is a university student studying music. I put them together because they presented virtually identical pictures. I dowsed Susan's age as 19 years. Apparently she is 18 years and a few months. Both presented the basic picture of healthy young people but with a reasonably small number of deficiencies (12 and 7 respectively). However, both included a combination I recognise well. The combination involves Choline, Inositol, Omega 3 and Omega 6 fatty acids, together with Chromium. In certain proportions, this produces serious fatigue. Doctors often class it as chronic fatigue but in my experience it is not the 'full blown' fatigue that one would associate with an M.E. patient. However it can easily progress to that if left unchecked.

Both actually had serious fatigue. Racer had undergone numerous medical tests but all proved negative. They both recovered very quickly and in a matter of weeks Racer had achieved two of his best ever results. He attributes them entirely to his treatment, claiming that he is now able to concentrate like never before during the latter stages of a race. Susan is back at university and fully recovered.

LINDA

Linda was the first person I helped by remote dowsing. To this day I have never met her, only received lovely flowers and a big thank you. Linda was a referral from another patient who lives in France.

When she phoned (having been told not to give me details), it was just before I was due to go on holiday so I

said I couldn't help for several weeks. At this point she became rather upset and proceeded to tell me everything.

Essentially, she was a middle aged woman who had always looked after herself. Then, early in the year, she had started to have problems with her achilles tendons becoming inflamed. Several trips to the doctor and treatment with anti-inflammatories got nowhere and it wasn't long before she found herself in a wheelchair. Under the supervision of a hospital consultant, she had been having physiotherapy several times a week but had made no progress. It was now September and she was extremely worried.

Linda presented the picture of a well woman apart from two things. Firstly, she had massive levels of mercury and aluminium. Secondly she was seriously short of nutrients the body uses to try and eliminate such toxins, notably zinc and selenium.

Much discussion followed regarding possible sources of the metals but we didn't really get anywhere with that. Given homeopathic antidotes for both metals and supplements as needed, she recovered more rapidly than anyone could imagine. When I phoned two weeks later her husband said she was not only out of the wheelchair, she had gone for a walk and was contemplating returning to line dancing that weekend. Suitably horrified, but also delighted, I suggested she try a gentle swim instead! In 15 months the problem has not returned.

MARTIN

As a final example, Martin was probably the most reluctant 'patient' I have ever seen. I solved a serious problem for his wife and she absolutely insisted that I dowse him. He didn't want to know and said he had no problems. She insisted he had and they were serious. It was all quite funny.

Very reluctantly, Martin sat in front of me poker faced and arms folded. By the time I had got half way through my list he still looked a picture of health compared to most clients and I felt this was going to verify all his opinions. However, he did present extraordinarily low levels of Q10 in combination with certain B vitamins.

There was absolutely nothing else, but I had seen this combination before, indeed I had experienced the same problem myself. So I took the only option I had and just said, "I think your gums probably bleed."

He went crackers. "You told him!" etc. It turns out he had quite severe gum bleeds to the point where the blood would get on bed linen. He had spent an absolute fortune at the dentist to no avail.

Within two weeks his problems were solved. It is nearly 3 years since I dowsed him and he has only had one or two very minor relapses when he gets short of Q10 (he needs to supplement it regularly). The moment he corrects it the problem goes away.

SUMMARY

I hope these examples illustrate some of the scope and capability of dowsing for health. In the second part of this article I will explain how I arrived at certain dowsing targets and discuss the experiences that made me realise they were indeed 'dowsable'.



Sue Brown

Archaeological Dowsing

Editor's Note: These two articles refer to the pre-congress session on Archaeology that took place at Cirencester last September. Owing to lack of space these were not printed in the December edition of *Dowsing Today*, but they would have formed part of the Annual Congress Report.

ALAN NEAL WAS INTRODUCED BY ANNIE HOLLAND

Alan has dowsed many sites in South West England and the UK. His book is called "Dowsing in Devon and Cornwall". He is active with both Tamar and Devon Dowsers and taught archaeological dowsing in the West Country and here at Cirencester Agricultural College.

Alan called his lecture *Archaeological Dowsing Providing Proof*. He felt that archaeological dowsers find it difficult to find positive proof and recognition of their work. Professional excavation and geophysical surveys are expensive. A dowser is fortunate if excavation or geophysics is available to verify their work. Alan focussed on the four occasions when his dowsing was validated by later evidence, verbal, photographic, uncovering artefacts and on one notable occasion an archaeologist witnessing the whole proceeding.

While living at Marazion, near St Michael's Mount, Alan read two books which influenced his dowsing career – "The Pattern of the Past" by Guy Underwood and "Dowsing, One Man's Way" by James Scott Elliot. He decided to try dowsing the church at Marazion, which was thought to be built on an earlier foundation. So one dark wet evening Alan surreptitiously dowsed to the north of the church, while thinking about the earlier church foundations. He got a strong response. At home he drew a rough map of the dowsed site, put it away in a drawer and forgot about it. One day it was decided to improve the area around the church but this work came to a halt when the remains of walls were found and archaeologists came in to record them. Documents showed that the chapel built on this site was granted a licence by Bishop Stapleton of Exeter in 1309, but there may have been an earlier church there. The pattern of the foundations was almost exactly the same as Alan's map. This experience gave a huge boost to Alan's confidence in his dowsing ability.

Pengersick Castle is the title of the remains of a fortified Tudor manor house. Overlooking the present castle on the wooded hillside is a lone platform where the early Medieval manor house once stood. On this site, Alan dowsed a much older hut circle and carefully marked it out. Later it was excavated by local archaeologists, who unearthed many potsherds and bits of a granite quern. Unlike Dartmoor, where there are visible signs of Bronze Age hut circles marked by lumps of granite, there are none at Pengersick. In this area wattle and daub would have been used, which in time would rot away leaving no archaeological trace. By pendulum dating, this site was revealed to be Bronze Age.

The valley of the River Kensey lies in North East Cornwall, where an Augustinian Priory once stood, overlooked by the Norman castle of Launceston town. This was the largest and richest Priory in Cornwall and had a great many parishes. After the Dissolution of the monasteries the Priory was razed to the ground and was used as a stone quarry. In 1257 Prior Robert Fishacre had

founded a Leper hospital to the east of the town. Since the Dissolution of the monasteries, the positions of both priory and leper hospital were forgotten, although remains of the Priory were found with the building of the railway. In May 2002, Alan and a friend, map-dowsed the area for the leper hospital. They both hit on the gardens of 2 semi-detached cottages. Later, dowsing in an adjacent field, their rods independently pointed to the cottage gardens. But they needed verification and this came from a long time resident that owned the riding stables next door. Unprompted, he indicated the position of the leper hospital exactly where the dowsers had found it.

He was also asked to find a stone row on Dartmoor in July 1996. Having 'tuned in' on a well-known Bronze Age stone row, he then joined a group, including an archaeologist, in the forested area of the lost stone row. After walking some distance through the trees following his rods, he eventually found a tooth shaped lump of granite. This find led him to one end of the stone row, then circumnavigating tree trunks and branches, the rods indicated the other end of the stone row. There was nothing to see on the ground, but digging down with rods and hands they found the hard stone hidden in the earth below.

Alan regards the 'tuning-in' to the stone row on Dartmoor as an essential element of every aspect of dowsing. Establishing this mental link is rather like tuning in a radio, to obtain a better signal. Alan felt that if archaeological dowsers worked carefully on archaeological sites, then dowsers and archaeologists would both benefit from increased knowledge at those sites.

EDWARD FAWCETT INTRODUCED BY SUE BROWN

For many years Edward Fawcett lectured on the History of Garden Design at the Architectural Association. He was also an advisor to the National Trust on this subject and became Chairman of the Garden History Society. Dowsing has assisted him in finding many of Europe's lost gardens, which has led to their reconstruction. He has a passionate interest in Prehistoric Europe.

Like Peter Ewence, Ted felt there was an optimum speed of dowsing. A Russian scientist at the Scientific Research Centre in Oxfordshire proved that the dowsing signal depends on the speed that you approach and pass through an anomaly.

Peter also mentioned memory or Remanence, a subject Prof. Richard Bailey writes about in his book ("Dowsing and Church Archaeology"). The archaeology department of English Heritage sent Ted a letter saying that the magnetic trace formed by a sarsen stone will remain in the ground long after the removal of the stone. It is this memory trace that dowsers pick up.

Laying out a 5-metre grid will enable very precise recording. Ted thinks it is vital to lay down a grid from which to measure and record your dowsing survey. If you mark your starting point with a datum post, you can lay that grid out again and check your results.

He felt that we must be wary of the interference of our conscious mind with our unconscious mind while dowsing. There can also be a problem with repeat signals. If you find you're getting a signal every 3 or 4 paces or 10 paces, that

Archaeological Dowsing

signal can continue, past the time when the actual anomaly stops. As Peter suggested, always check your dowsing.

There are at least 4 archaeologists that Ted knows well, who were rabidly against dowsing. But they've all found that dowsing is an exceedingly good way of saving themselves thousands of pounds, through digging their trenches in the right places. Instead of archaeologists believing that dowsing is witchcraft or non-science, they begin to see that archaeologists and dowsers can work together to the enormous benefit of both parties.

He started dowsing when he was about 11, while staying in a hotel near Esher. He remembers, 'There was a group of people on the lawn, and as I came out one of them said, "Give the boy the stick, he can do better than you." Well I'd never held a stick like that in my hand, but within a minute I had found the burst water main they were seeking, they'd dug it up and all was well, so a successful introduction to dowsing. Later at Avebury, Ted thought he'd see if he could find a lost stone and in the afternoon he found 96 lost stones, but nobody wanted to know. He might have a better reception now

Ightam Mote is a National Trust property and Ted was asked to write the guidebook for the house and gardens. So Ted dowsed and found various ponds and realised that they were fishponds to provide fish for the table; ponds for hatching, fattening and holding. He dowsed a long narrow

pond and probed the walls all the way round. The slides showed what Ightam Mote was like in 1765, the lawn was much narrower and could well have been a pool originally. Later very heavy rain fell, the rainwater showed the old inner pool. So it was gratifying, to have the dowsing proven by the rain.

There have been equal successes dowsing other historic gardens. On the upper Golf Course at Moor Park, Rickmansworth, Ted and Jane discovered the lost 18th century house and gardens with its fountains and grottoes. At Campden House, Chipping Campden English Heritage asked Ted to see if the terraces were revetted and if there were three lots of steps coming down. He dowsed and verified these by digging into each set of steps. At Hatfield Lady Salisbury wanted to know whether the main forecourt and the north court had been increased in size, in the 19th century, when Queen Victoria came to stay. After many visits of careful dowsing Ted found a loggia going through the wall down to a lower level, with the Bowling Green in front. When the head gardener was digging there he discovered at least half of the walls Ted had predicted. Similarly at Kirby Hall, Northamptonshire, Ted's dowsed survey of the garden was compared to an English Heritage geophysical survey and they were almost exactly the same. Ted has shown what an amazingly useful tool dowsing is when finding lost historic gardens.



John Moss

Are You Lonesome Tonight?

FORMING LOCAL DOWSING GROUPS

During the last few months we have had an increasing number of enquiries from members and non members who are seeking local contact with other dowsers. Sadly we have often had to tell enquirers that there is no local group in their area.

My first experience of dowsing came in 1997 when I caught sight of an advertisement in my local Parish magazine. A dowser was trying to start a group. At the time I was interested in finding a new hobby to provide a diversion from a stressful and unfulfilling job. It is a strange thought that attending my first meeting and feeling the rods move has led to the Director's chair at the BSD!

A short while after the group had been running we made contact with the BSD and soon became an Affiliated Group, one of 17 that we now have in the UK. Membership of a Local Group provides an invaluable source of help and support for dowsers

So what does an Affiliated Group mean? At the present time, it means that the Group adopts our model constitution which provides a useful framework for actually running the group and provides access to our Group Third Party Insurance Policy. Additionally the Group will be able to take advantage of our special offer for website facilities, an essential tool which is very useful in attracting new members.

At the Office we are keen to help and encourage the Groups as much as possible and Council Members regularly visit. We

are developing a package of discount offers for equipment.

Groups have their own Forum at Congress which is well attended and produces good ideas for developing Groups and their programmes.

If you are a solitary dowser who would welcome local contact or if you would like to help form a Group, please either contact us or one of the following members, if there is one in your area. It should be stressed that by agreeing to list their names it should not be assumed that they will actually run the new Group. They will simply be acting as a focal point at this stage.

- Jim and Wendy Doyle, Cambridge area, East Anglia, 01223 513016 or email wendy@polygon.demon.co.uk
- Brian Smith, Durham area, 0191 5120069
- David Brown, Clacton on Sea area, 01255 862510
- Beth Kydd, Kellington, Yorks area, 01977 661307, email beth.kydd@ntlworld.com
- Margaret Riley, Edinburgh area, please contact BSD Office
- Georgina Norman, Gainsborough/South Lincoln area, 01529 460526
- Bart O'Farrell, Penzance area, 01326 280681
- Irenka Herbert, Newport, South Wales area, 01633 669638
- Samuel Ellis, Rampside Cumbria area, 01229 821257
- Sue Scott Powell, Buckinghamshire/West London area, 01494 813214
- Tim Markovits, Isle of Wight, 01983 852557, email tim@markovits.freeserve.co.uk



Jim Andrews

Tracing 'Lost' Roman Roads

Dowsing Today displays an increasing interest in archaeological work, typified by Ian Pegler's excellent piece, *Dowsing for Roman Roads in Wales*, in the December 2004 issue. He explains clearly how he goes about this – just what our magazine is all about; setting people thinking! Archaeological dowsing happens to be my 'thing', having spent several years with my wife locating Roman roads and bye-ways in South-East Cumbria. Ian Pegler's article made me wonder if our own experiences in this field might help others in 'what to look for'.

As amateur archaeologists, our tracing of ancient roads began simply as an objective for walks. The results gradually evolved into a web of routes marked on our OS maps – dotted (for suspected), black-lined (dowsed), or red-lined, indicating stretches actually visible (however minimally) on the ground surface.

COMBINING VISUAL CLUES AND MAP DOWSING

Realising that during their push northwards the Romans must have built a road from their Watercrock fort at Kendal, to its partner-fort at Ambleside at the head of Windermere, we began at the former. None of this route had been recorded, but a number of place-names, containing 'street', 'stone', 'stane', 'ash', 'borrans' (stony place) etc., gave us initial clues. But one can find even more definite hints, with experience.

Before long, we developed a routine. We would start at home, with as big a map of the area as we could obtain, and (like Ian), carefully map-dowse it. Despite being unable to imagine any possible reason why map-dowsing works, I accept that I can make it do so, just as with no understanding of their inner complexities, I can operate a TV set or computer.

Initial search would use the map's grid plus a favourite small pendulum, working along the bottom margin first, 'asking' if there was any 'visible Roman Road north of here' and marking the Grid Ref. if the pendulum reacted. Working up the side margin, hopefully to another reaction, the plotted co-ordinates should indicate where to start looking outdoors, in the countryside.

RODS AND EYES

It is of course incredibly rare to go to the location and see a fine, paved agger or set of roadside ditches you could fall into – though astonishingly, after nearly two millennia, such do still exist. More usually, we would park the car near the indicated field or whatever, look over the hedge and recognise nothing even remotely Roman. Once inside the field, however, several things could show up.

Where a Roman road has been totally ploughed out by agriculture, dowsing with 'L'-rods (in preference to pendulum or wand) can nevertheless pick up its 'ghost' and swiftly indicate its orientation. Even if the field surface itself may nowadays appear boringly flat, a look under any hedge on the indicated alignment (where it won't have been ploughed) may well show the hump of ground directly over the *agger*, the central part of the road itself, almost like an archaeological section.

Alternatively, there might be a farm gateway – then another and yet another, all in a dead-straight line – a frequent give-away! Farmers, as any dowser who finds water for them knows, aren't fools – they appreciate good

hard-core when they find it, and Roman road-construction to this day makes for wonderful field gateways where tractors and cattle won't sink in. A row of loose stones can sometimes provide clues, too.

In exceptionally wet weather, a pair of narrow, parallel lines of surface water, angling neatly across a field, may obligingly reveal the ancient roadside ditches.

Hidden in otherwise completely natural, wild woodland, look out for straight lines of trees. Seedlings more easily send down roots and flourish in the softer, damper ground of ancient, filled ditches, than on the surrounding, time-hardened surfaces. Once you've recognised this phenomenon, 'Trees in Ditches' are easily spotted – a ready clue in many areas.

STANDARD ROAD WIDTHS AS QUOTED IN KEITH BRANIGAN'S "ROMAN BRITAIN", PP.123-126:

MAIN ROADS: (originally) 20-23ft (6.1-7.0m). [However, at least one, known in AD 50 to have been 20ft wide, had by AD 120 been widened to 43ft (13.2m).]

LESSER ROADS: from 13ft (3.96m) to 16ft (4.88m) wide.

(Author's) Paces	Roman Pacae	Metres	Feet
4.0	2.0	2.80	9.21
4.5		3.15	10.36
5.0		3.5	11.51
5.5		3.85	12.66
6.0	3.0	4.2	13.82
6.5		4.55	14.97
7.0		4.90	16.12
7.5		5.25	17.27
8.0	4.0	5.60	18.42
8.5		5.95	19.57
10.0	5.0	7.00	23.03
12.5		8.43	27.73

"BUT IS IT ROMAN?"

You've found your 'hidden' road and its course – but how, as Ian asks, can you be certain it is of Roman origin? Dating with a pendulum is of course one way, and can be chronologically useful – but there is an easier and perhaps more positive method of determining whether or not you are dealing specifically with Roman *military* ways – major or minor. Those readers who are or have been foot-soldiers will know, because armies haven't changed in their way of doing things: Your corporal, sergeant [*optio, centurion,*] or other boss-type, will have read a set of "*Rules, Road Building For The Use Of*", to which he and his men shall work – regardless of terrain.

Conveniently, for us trying to check on them, Roman road-builders not only had to dig a deep drainage ditch immediately on either side of the central *agger*, but beyond those, they also had to clear wide swathes of ground of trees and undergrowth – a sort of barren 'long acre', offering minimal ambush possibilities.

Thus, where Roman *military* roads are concerned – and the majority in that period were built by soldiers – you can trace not only the typical road itself, with its ditch-bounded, humped *agger* of hard-core covered with some sort of metalling, but, some twelve paces, [6 Roman *pacae*, as they counted 'left-right' as '1' *pacum*], exactly 8.43 metres out

Tracing 'Lost' Roman Roads

from each of the big road-side ditches, they *always* cut a smaller ditch parallel to the road. This marked the outer limit of the cleared swathe.

Just occasionally, where a Roman road still crosses open moorland, such outer ditches remain visible. One of several examples in the North of England may be seen cutting through the rough grass 2_ miles SW of Ingleton, Yorkshire, on the north side of what is now a minor road forking off the A 65(T), roughly a mile beyond Goat Gap Inn – Grid. Ref. SD 722698.

The important point is that, regardless of the width of the central agger of the road itself, or of how important or secondary a route it may have been, these 'berm' ditches, as we've taken to calling them, are *always* 12 (of my) paces out from the Roman roadside drainage ones. If they are closer, or further off, I become deeply suspicious! As mere limit markers to which the ground would from time to time have been re-cleared of shrubs, they appear to have had little or nothing to do with drainage, for they were dug on both the up-hill *and down-hill* sides of military routes skirting along contours, on even the steepest hillside. (Typical army stuff: "*You digs 'em 'cos they're in the orders, soldier!*")

Civil road-builders have never been all that fussy about 'anti-ambush' clearings, so if you can locate where they've been (or still are), such outer, 'berm' ditches offer, I believe, absolute confirmation that you really are dealing with a Roman Military roadway. If not Roman, similar ditches are unlikely to continue for mile after mile at exactly that 12-pace distance, or along both sides of routes – not even where motorways are concerned, and wouldn't the Romans have loved those!

STRAIGHT LINE ROUTES OVER IMMENSE DISTANCES – BUT HOW DID THEY 'AIM' THEM?

Pick any long, straight road in Britain (or any country once part of the Roman Empire), and have a dowse around it – even if it's clearly marked '*Roman Road*', or more vaguely, '*course of*', on the map. Dowsing an already known site is the best way to get the 'feel' of the subject – and no, they aren't *always* straight, because Roman engineers weren't stupid. Quite often, a sudden re-alignment is also where the road forks or is joined by another, but all sorts of diversions from the intended (and therefore shortest) line might take place during their construction, dictated by awkward terrain, water, or in some cases by factors no longer obvious. We see a lot of this, following the Romans across the steep, craggy and often sodden Cumbrian topography. Quite often, modern roads on the course of Roman ones now bend out and back, 'ambling over the *agger*' – we assume as a result of long ago failure of the original surface at that point.

Once we'd traced the Kendal/Ambleside route [see *Cumberland and Westmorland Antiquarian & Archaeological Society – Vols. XCI & XCII, 1991*], we found that, despite steep topography, the Roman road never deviated more than 2.5 km off the direct 19.2 km line. Moreover, while the total distance by modern roads is 23.1 km, the Roman route is only 22.8 km long. Good going – *especially as one cannot see either place from the other*, due to various inconveniently sited Lakeland fells. And yet, the route we found actually set out – initially – from the Watercrook fort, on what we now know is an *accurate compass course*, directly aimed at Ambleside.

The Romans didn't have compasses however, and have you ever seen a copy of an Ancient Roman 'map'? Several survive, and 'approximate' is hardly the word. In any case, such connecting Military roads were apparently constructed within a very short time of two forts (as opposed to mere 'marching camps') being established, at a time when hurried surveying, in what was then extremely unfriendly territory, must have been fraught with problems.

There are many examples of such nevertheless amazing accuracy. The (known) Roman Road from Manchester to York, for example, set out on so precisely the correct bearing for many miles, despite all kinds of hills – including the mighty Pennines – in the way. Yet *on a modern map*, that original 'start up' stretch, if projected, ends less than 2 kilometres south of the York fortress. That is Accurate!

The Roman road from the seaport of Chichester on England's south coast, direct to the fortress established at *Londinium*, set out on *exactly* the right geographical bearing – with the South Downs, never mind sheer distance, preventing direct sight-lines.

Archaeologists have long speculated on how the Romans achieved such accuracy. How *did* they know which direction to start it? Suggestions have varied from successions of men with ranging poles standing on (probably forested) hilltops (how do you choose which line of hills points the right way?); to smoky bonfires that could provide sight-lines – but how, *when they didn't know more than vaguely what direction to start in?* And in windy, wet *Brittanicum*?

ASTONISHING ACCURACY = ASTONISHING INSTRUMENTS

The principal surveying instrument of the Romans was the *groma* – a staff with an eccentrically mounted horizontal cross at its top, from the arms of which hung *pendulums*. I am now utterly convinced that Roman engineers knew uses of pendulums other than the obvious ones of ascertaining verticals and straight lines. The Ancient Egyptians are known to have dowsed – for water at least. If the Romans could dowse, that might be the answer: they could then get a line on anything or any place, from anywhere else.

I have tried it, and it works. It's easy with a single 'L'-rod, but so far there is no evidence of the Romans using those. So, from my home, by way of experiment, I once 'asked' my pendulum to indicate the direction to the Watercrook fort, some 15 miles away, roughly eastwards beyond numerous steep Lakeland fells and 'scars'. Carefully drawing the indicated line on a piece of blank card I'd fixed to a table beneath it.

Not being limited by Roman technology, as a check I simply took a careful compass bearing along the line, corrected that for the known magnetic Deviation of the area, and lo! The transferred and extended bearing, drawn on a correctly orientated map, led directly to the southernmost, earth-banked, corner of the fort. Careful sighting along the line on the card (or a wax tablet), would have been good enough for a Roman engineer to deploy his first couple of ranging poles on the correct heading ...

Try it! Get your pendulum swinging 'in neutral' and ask for the direction to, oh, your nearest Tesco, or whatever. You can do the same (more simply) with 'L'-rods. You can even navigate a boat that way. Did the Romans?

Ced Jackson

Ley Lady Ley – Book Review

**LEY LINES: THE GREATEST LANDSCAPE MYSTERY
BY DANNY SULLIVAN
GREEN MAGIC ISBN 0 9542 9634 6**

I will get dead straight to the point. This is a very good book, much better than its cover or a quick skim might suggest. Danny Sullivan knows his leys, being an ex-editor of the Ley Hunter and current editor of Third Stone.

The book is valuable on a number of counts. It provides an extremely interesting and impartial history of the development of ley studies since Watkins Herefordshire Old Straight Track Club and the 60s revival, showing how interpretations have changed and developed. This is a fascinating intellectual history, and its clarity illuminates our own frequently less than sorted notions of what leys actually are. The book also provides an excellent gazetteer of fifty leys, illustrating different aspects of the discipline.

Within dowsing circles an 'energetic' interpretation of leys tends to be the norm, yet in recent years as the book points out there has been a strong emphasis on leys as death roads, corpse paths, and spirit ways, including such interpretations as the route along which a coffin was taken for burial, the source of ghostly apparitions, and spirit flight.

It's rather like the old trick of taking three matches, forming a triangle, and asking someone what they see. 'A triangle' they reply. 'No,' you say, 'It's only three matches.' Is there such a big difference between an 'energetic' approach and a 'spirit' approach. Maybe its just a continuum of interpretation between physics at one end and personification at the other.

I think Danny brings out extremely well the embedded Britishness of the ley hunt. Watkins did not come out of nowhere: "A tireless and constantly active man, he had before his 'revelation' given numerous scholarly papers to the Woolhope (Herefordshire local history) club and published books and pamphlets on subjects as diverse as pigeon houses, Herefordshire place names, architectural history and archaeology, old Herefordshire crosses and bee-keeping, as well as photographing and cataloguing the minutiae of Herefordshire country life...Watkins was a pioneer, and much of the charm of his books derives from his evocative photographs of lost Herefordshire sites: his observations and ideas were bred out of his personal experience and can be said to be have been shaped by it."

Watkins was also essentially British in his pragmatism: "His explanation for the ley phenomenon was as utilitarian, basic and down-to-earth as the man himself." The fact that the organisation was called the Straight Track Postal Portfolio Club ~ "essentially a round-robin collective and co-operative research project" ~ calls to mind the vital role of the London Corresponding Society highlighted by E.P.Thompson in the Making of the English Working Class.

As someone who now lives within bull hurling distance of the Herefordshire border, I am aware of how lightly man still lives upon Watkins Herefordshire landscape; the evidence and the evocations are still there. It is the intimacy of the landscape and its thingy-ness-in-itself which allows us to touch the mystery.

As for the grand theory, buy a box of matches.

SPECIAL OFFERS AT THE BSD BOOKSHOP

This new book is available from the Dowsters' Bookshop on special offer while stocks last.

Ley Lines: The Greatest Landscape Mystery by Danny Sullivan £9.50

Related titles also available on special offer:

Ley Lines and Earth Energies by David Cowan and Chris Arnold £12.00

Working with Earth Energies: How to Tap into the Healing Powers of the Natural World by David Furlong £8.50

Shamanism and the Mystery Lines by Paul Devereux £9.50

The Sun and the Serpent by Paul Broadhurst and Hamish Miller £12.50

Stukeley Illustrated, compiled by Neil Mortimer £9.50

Timpson's Leylines – a Layman Tracking The Leys by John Timpson £12.00

Please add 15% for postage and packaging.

To order call us on 01684 576969.



The BSD Website

The BSD website was initially set up by Michael and Diedre Rust when they were running the office administration. Since the office moved to Malvern, the website has been significantly upgraded by our Hon. Webmaster Barry Hoon and Council Liaison Sig Lonegren. There is an active Forum moderated by Council Member Grahame Gardner and our events pages are now being constantly updated so that members can find out what is happening in various groups within the Society.

We offer all Affiliated Local Dowsing Groups space on the BSD website to list all their location details, officers and to promote their work and events or indeed anything else

that they wish to publish. The same is true for the Special Interest Groups. At present the Earth Energies Special Interest Group has a significant site. In future we would like to see the Water Divining SIG, Health & Healing SIG and the newly formed Archaeology SIG have a presence on the website as well.

Our sales of books and equipment section is still under development. In due course you will be able to order on line. At present you can download a form and post the order to us. New members can join on line. We are very excited about our upgraded site and trust that you will visit it frequently and take part in our forum.

STOP PRESS new online shopping for books and equipment at www.britishdowsters.org



Reports from Groups

Surrey Dowsers

On Saturday 15 January 2005 Surrey Dowsers celebrated their 10th Anniversary with a Party at their regular venue, Elgar Hall, the United Reform Church, Raeburn Ave, Tolworth, Surrey.

After a short AGM, when Sue Wallace was voted in as our new Chairman, we celebrated with a buffet tea and dowsing games. One game involved map dowsing items from around the world. Another game was dowsing for a five pound note hidden under a large blanket that was taped down to the floor. The person who put their sticky label closest to the spot won the five £5.

The anniversary cake was cut by two founder members, President, Tony Wrigglesworth and Vice Chairman, Ann Stevenson, watched by retiring Chairman, Joan Meech.

Over the last ten years we have organised many interesting lectures and been on field trips. One of our members has spoken on local radio regarding the quality of tap and mineral water.

Surrey Dowsers teaches and promotes dowsing in Surrey. For further information contact our Information Officer, Joan Meech on 020 8399 9367.



Archaeology Special Interest Group

MEETING AT RYTON 23 JANUARY 2005

In response to the Archaeological Dowsing meeting before the last BSD Congress at Cirencester, some BSD members met to discuss forming a group that would encourage archaeological dowsing activities, give information about further opportunities and disseminate reports of their validated research. Everyone was welcomed and invited to introduce themselves and describe their interests, experience and ideas for the group. We found we all shared an enthusiasm for archaeology, history and dowsing. Many had worked successfully with local archaeological groups and archaeologists.

John Baker was elected chairman. John felt that the foundation of Archaeological dowsing was to produce thorough dowsing surveys that could later be verified by excavation and

possibly geophysics. John asked for volunteers to become contacts for Regional Dowsing Areas, who would gather and disseminate information on archaeological dowsing activity and archaeological events. Contacts were found for most of the following areas:— **SW; W Eng.; S Central; SE; E Anglia; E Midlands; W Midlands; N Wales; S Wales; N Eng; N Scotland; S Scotland and Ireland.** Mike Calnan is head of the National Trust Gardens Section and will be the NT representative for the group.

MEETINGS AND FIELD TRIPS IN 2005

The ADG will have an AGM, and possibly a meeting at the BSD Congress in September for talks, plus two field trips. Eleanor Burke has produced a programme for an action packed weekend in Yorkshire for the ADG and the WDG on June 18 - 19. She has found some amazing sites, one of which is unknown to archaeologists. Please let us know quickly if you are interested in going on this trip (see advert on page 24).

Mike Calnan has offered an archaeological dowsing exercise at The Lodge Park, near Sherborne in

Gloucestershire. Created in 1634 by John 'Crump' Dutton, Lodge Park was created for pleasure. At its centre is the viewing lodge, where family and friends would wine, dine and gamble on the deer running along the mile long 'course' in front of the Lodge. The park contains a Neolithic Long barrow and other sites.

The aim of the meeting will be to see if dowsing can detect evidence that a formal parkland layout complete with avenues, designed in the 18c by Charles Bridgeman, was ever carried out. Those interested can map dowse the site before the visit on April 17.

John Baker has had enquiries from Quarry Dean Farm at Merstham Nr. Redhill Surrey. This derelict farm on the Pilgrims Way has Neolithic terracing, Roman arches for quarrying, old mine workings and much more. There will be a trip in April 2005 (day to be finalised). Contact James Harrison on 01424 715906 for more information.

ELECTION OF OFFICERS

Communications and newsletters were discussed. Information about interesting dowsing activities in the different regions could be sent by email or by post. John Wright proposed that Sue Brown should be the Communications contact, which was approved. Tony David, an IT specialist suggested that an improved and cost effective way of inter-member communication could be via a news group. More details on this later.

Most archaeological dowsing activity takes place in the Regions. There will not be much group activity this first year, so it was decided to combine the roles of Secretary and Treasurer. Chris Francis was elected for this post.

There was an excellent exchange of ideas and experience at this inaugural meeting and out of this melting pot came a good foundation for the new Group. Many thanks to all those who attended and contributed so much to the creation of this new Archaeological Dowsing Group.

Any queries about ADG activities please contact:

John Baker mrimages@globalnet.co.uk

Chris Francis christ@heimat0.demon.co.uk

Sue Brown 01635 47181, suaugur.brown@virgin.net



Health and Healing Special Interest Group

AGM 12TH MARCH 2005 10.30AM

BURGAGE HALL, LEDBURY, Nr HEREFORD

1. Report and accounts year ending 31st May 2004
2. Election of officers of the H & H Special Interest Group
 - Chris Johnson • Sue Barnet • Alison Rex
 - Keith Harman • Judith Thomas
3. Special business: News letter and BSD
4. Any other business

GROUP DAY WORKSHOP 11.00am

BURGAGE HALL, LEDBURY, Nr HEREFORD

Speakers: Shirley Griffin, Margaret Webb, Brian Ackroyd

There will be a charge of £15pp for H & H SIG members £20 pp if NON SIG member. Please send your cheque ASAP, PAYABLE TO BSD HEALTH & HEALING GROUP WITH YOUR NAME AND ADDRESS to: Chris Johnson, 14 Millbrook Close, Worcester, WR3 7BJ. Please bring your own lunch. There are lots of shops selling food nearby. Tea, Coffee and mineral water will be provided free at breaks.

STRESS (the first of a series of articles)

One of the UK'S major causes of illness.

Tense nervous headache: each day 270,000 people in the UK take time off work due to stress and each year stress costs £7 billion through lost production, sickness payments and NHS charges.

Workplace stress is booming. Constant deadlines, shortage of skilled staff, sickness, sales and profit targets all add to the stress of every day working.

One area to consider is:

1. PANIC ATTACKS

Most panic attacks are sudden and give an intense fear of impending doom. You may feel you are going to die. There are physical symptoms of breathlessness, tingling fingers, tremors, palpitations, irregular or fast heartbeat, giddiness and sweating.

Understanding what triggers your panic attack can also help. Tensing and relaxing your muscles also eases the symptoms.

For advice call the NO PANIC helpline on 01952 590545 or the MENTAL HEALTH FOUNDATION on 020 7802 0300.

HERE COMES SPRING

What have you planned this spring and summer? Outdoor events, gardening or just a walk in the country. Sounds great, unless of course you suffer from hay fever. Well here is the bad news, as more of us battle through the winter with colds and flu, more of us are hay fever sufferers.

Pollution, rising temperatures, green house effect and the common allergies to pollen all add to the misery.

The symptoms – runny or blocked nose, streaming and itching eyes, all of which seem to go on for months. This can make your quality of life extremely poor.

Allergic conditions such as hay fever have increased threefold over the last 20 years, according to the Royal college of Physicians. 9 million of us have it each year.

So what can you do about it? Apart from the usual tablets, sprays and injections.

Why not try "DOWSING"? Dowsing to see what causes your allergic reaction, grass, trees etc. When you know what these are, stay clear of them.

Most important, find the root cause of the allergy, this might be stress or past life experiences.

Some simple help tips:

- Use wraparound sunglasses
- Keep the bedroom doors and windows closed at peak pollen times: mid morning and evening
- Dry cloths and bed linen indoors
- Check the pollen forecasts

WANT TO CONTACT US?

Chris Johnson – Chair

Skokholm, 14 Millbrook Close Worcester WR3 7BJ

Tel No: 01905 455138 E-mail: chjdowsing@supanet.com

Sue Barnet – Development Officer

The Wheel of Light, 57 Chilkwell Street, Glastonbury, BA6 8DA. Tel No: 01458 831970

Alison Rex – Meetings Secretary

18 Church Meadow, Ledbury Nr Hereford, HR8 2DG

Tel No: 01531 633017

Keith Harman – Deputy Chair

52 Helen Avenue, Feltham, Middlesex, TW14 9LB

Tel No: 020 875 10417 E-mail: nrgt@hotmail.com

WHY YOU SHOULD CONTRIBUTE TO THE NEWSLETTER

This newsletter is produced with the interests of the SIG members in mind, if you have an interesting experience or idea that you would like to share with other members put pen to paper. Having spoken to most of you over the last 18 months I know how good you are at dowsing, so tell us about it.

It's your SIG we only administer it on your behalf. CLOSING DATE FOR THE JUNE NEWSLETTER TO APPEAR IN 'DOWSING TODAY' IS FRIDAY 7TH APRIL 2005. Send to Chris Johnson, PREFERABLY BY E-MAIL.

Chris Johnson, Editor, Health and Healing SIG

Water Divining Special Interest Group

BSD VISIT TO ZAMBIA: 2-16 JULY 2005

Plans are now being finalised for the Water Divining Special Interest Group visit to Zambia. There are places available for six BSD members to take part and the total cost is likely to be in the region of £1300.

Two groups will be divided into mixed abilities so that dowsing work can proceed quickly in the field. Dowsed locations will be selected for drilling and hand excavation and these sites will be developed over the next two years. There are strict criteria that have to be met before approval can be given for development so there is much more than dowsing involved.

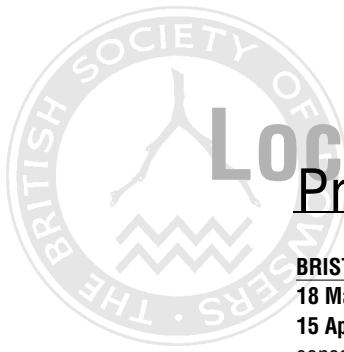
Fortunately there is plenty of underground water in the Western Province but the crucial skill is accurate dowsing for depth because there are cost implications between

drilling and hand excavation.

It will not all be hard work. Everywhere we go we are assured of a warm welcome from villagers. They are delighted that we are there because they know that we can make a real difference to their lives. The common language is English. I can assure you that you cannot buy more fun from any travel agent!

Some holiday time is included with three days in a game lodge by Victoria Falls, on the Zambesi River and the Livingstone game Park. It will be a superb time but we have to move quickly. Air tickets to Zambia are in short supply and payment has to be made quickly.

Please contact David Dixon via the BSD Office for more information.



Local Groups

Programmes of Events

BRISTOL DOWSERS

18 March – Jason Viner– Aspects of Healing
15 April – Anthony John Kennish Dowsing for consciousness. Then AGM.
8 May – Visit to Lydney Park

DEVON DOWSERS

8 March – Ross Hemsworth
15 April – Daphne Gillbrand – Dowsing for Health

GREATER MANCHESTER DOWSERS

18th March – Reflexology – Janette Pope.

LONDON AND THAMESIDE DOWSERS

26th March – Geopathic Stress – Billy Gawn, 2.15-4pm. Contact Vicky Sweetlove on 01277 203180.

21st May – An introduction to the science of dowsing and research into wood henges – Geoff Crockford.

SOUTH HEREFORDSHIRE DOWSERS

3 March – Rob Campbell – Coincidences

SURREY DOWSERS

19th March – Practical experiments with energy fields – David Webb.

16th April – Auras, graph sensing & drawing the aura – Elaine Miller.

21st May – The power of collective thought – Andy Thomas.

WEST WALES DOWSERS

March – AGM

April – Grahame Gardner –Geomancy and sick houses

May – Richard Creightmore – Feng Shui

WYVERN DOWSERS

21 March – Andy Thomas, The Power of Collective Thought

18 April – Patrick MacManaway, A Geomancers' Casebook

16 May – Jim Lyons

From the Office

Office News

As I write these words on 1st February, the sun is shining on what feels like a spring morning. Last week's snow has finally melted from the top of the Malvern Hills and we watch the willow tree outside for the first sign of bursting buds. These feelings of optimism are mirrored inside the office where we continue to shrink the backloads of work and finalise preparations for the busy and exciting year that lies ahead.

We are delighted to welcome Liz McGain who is our new Administration Assistant. Liz has settled down well into the team and her arrival has allowed us to redistribute tasks so that we are able to work more efficiently. We hope you have already noticed the faster response time to your enquiries. We are of course all employed part time and are trying to set our timetable so that we can provide the best level of service to you.

The work on the Library/Archive continues with about half the boxes unpacked. The shelves are filling up rapidly.

Some fascinating old books are coming to light together with some interesting dowsing tools and research papers. We are soon going to be able to plan the layout and cataloguing. We are also designing our shop window display. We have many passers by, mainly tourists on their way up the hill and we already attract curious glances. When we open to the public (which will be for restricted hours) we think our team of volunteers will be very busy.

We have had several enquiries from the media recently which have been passed to relevant members. The resulting broadcasts have produced numerous enquiries about the Society and the services of members on our Professional Register.

Finally, I would like to draw your attention to the BSD Courses that are available to you this year. Bookings are coming in quickly so please don't leave it too late!

Happy Dowsing.

John, Helen, Sylvia, Liz

Council News


During the last weekend in January meetings were held covering Education, Finance, and the forthcoming Conference in Malvern. Good progress was made with the arrangements for the Office to take on the finance and support role for the Special Interest Groups. It has been decided that each SIG will have its own Bank Account, maintained by the Office. The new system will take effect from 1st April. Four new members were approved for the Members Register of Professional Dowsers and three for the Register of Tutors. 41 new

members were elected.

Following the Council meeting, the Annual General Meeting of the Society was held at the nearby Friends' Meeting House. A gathering of 32 members were present. (a few more than last year). The minutes will be distributed in due course.

Vice-President Sig Lonegren then intrigued and entertained those present with a lecture entitled 'Animal, Mineral, Vegetable, which was enthusiastically received.

Notices



**Dowsing for Archaeology
A BSD Core Curriculum Course
24-26 June 2005
Cirencester**

BSD Registered Tutor John Baker

Prices as for Dowsing for Beginners Course on this page.
This course gives a thorough and comprehensive understanding of dowsing for archaeology and the issues surrounding it, and gives guidance and coaching on dowsing for archaeological targets. Participants should be competent dowsers. If not already at this level, we recommend that you attend one of our Dowsing for Beginners Courses.

John is Co founder and Chairman of London and Thameside Dowsers and is now Chairman of the Society's Archaeology Special Interest Group.



**Weekend Course: Dowsing for Beginners
A BSD Core Curriculum Course
29 April- 1 May 2005
Hawkwood College, Stroud, Gloucestershire
BSD Registered Tutor Vicky Sweetlove**

Vicky is a Professional Member of The Society and Secretary of London and Thameside Dowsers. She is a member of the Executive Committee of the Feng Shui Society.
The course will give participants a good opportunity to learn basic dowsing skills with the four main dowsing tools, pendulum, L-Rod, Y-Rod and Bobber/wand and the way in which these skills can be applied to everyday life. This course is ideal for those who have limited dowsing experience as well as for complete beginners.

Ensuite and/or single room £245
Non Ensuite and/or shared room £215
Non residential £180

A second Dowsing for Beginners course will be held at Launde Abbey, Leics on 7-9 October.

To apply: please contact the BSDOffice for an application form.

Archaeology Special Interest Group

18-19 June

Joint meeting of this group with the Water Divining Group in Yorkshire

For details contact John Baker mrimages@globalnet.co.uk
or Sue Brown 01635 47181

New members welcome

*Health and Healing
Special Interest Group*

**Dowsing for Health. A BSD Core Curriculum Course
29-31 July 2005, Aston Clinton, Bucks
BSD Registered Tutor Chris Johnson**

Prices as for Dowsing for Beginners Course on this page.
New Members welcome to this Group.
Please Contact Chris Johnson (details on back cover)



Earth Energies Special Interest Group

Spring Meeting
16 April 2005 at Ryton Organic Gardens Coventry.
Please contact Jo Cartmale for details – see back cover.

Weekend Course: Introduction to Power Centres and Sacred Space
11-12 June 2005 Amesbury Wiltshire
BSD Registered Tutor Sig Lonegren

Develop your dowsing skills in ancient sacred spaces and learn how to create new ones. The course includes a dawn trip to Stonehenge. This is an advanced course and there are specific entry requirements.

Cost £180 to include food, accommodation and access to Stonehenge
Please contact the Office for booking information

Water Divining Special Interest Group

20 March 2005 Water Dowsing Workshop
Joint meeting with Malvern Spa Association in Great Malvern, dowsing wells and springs

1 May 2005 Dowsing the Springs
Joint meeting with MSA Visit the decorated springs and wells

18-19 June Joint meeting with Archaeology SIG in Yorkshire,
please see box on this page.
The Water Divining Group welcomes new members
Please contact Jo Cartmale for details (see back cover)

Giving to 'Village Water' and 'Water for Life'

Brother Kimpton and his team live well away from the areas affected by the tsunami but they are now working on a project to house orphaned children and other needy people in a model village close to the disaster area. Funds are urgently needed. If you can help, please forward your cheque, payable to Water for Life, to the Office. Your help will be much appreciated.

Village Water Fundraising Update

The BSD visit to Zambia takes place 2-16 July. Cost will be approx £1300 all inclusive. Trip includes 3 days on Kaoma Model Village Sanitation Programme, 4 days on the Mongu District Water Programme and 3 days holiday (inc travel) by the Victoria Falls and Livingstone Game Park. Places are very limited. Please contact the Office for more information.

Please note: the Society's new email address is info@britishdowsers.org

Advertisements

Dowsing for Beginners

**2-day British Society of Dowsers
approved courses
Prestberries Natural Therapy Centre,
Blackwells End, Hartpury, Glos.**

Discover how dowsing can be applied to everyday life. Prestberries, a delightful old farmhouse dating from the 15th century, provides ideal opportunities for learning to dowse.

Course 1, Saturday 9 April and Saturday 16 April
Course 2, Saturday 4 June and Saturday 18 June

Cost: £92, to include refreshments
and 2-course buffet lunch.



APPROVED

For more information please contact John Moss, Registered Tutor, on 01989 750114
or email mossinthewoods@btpenworld.com

Introduction to Earth Energies

**2-day British Society of Dowsers
Approved Course
Kilpeck, Herefordshire**

- For those who have some experience of dowsing to a competent level, or have attended a beginners course.
- Dowsing earth energies
- Geopathic Stress
- Sacred Sites

An exciting opportunity to further your skills in peaceful surroundings including an ancient church and castle mound.

14 and 21 May

Cost: £92 to include refreshments
and 2-course buffet lunch.

SMALL ADS

COPPER GARDEN TOOLS: hand-crafted, hardwearing, garden-friendly. Implementations, P.O. Box 2568 Nuneaton CV10 9YR. Tel 0845 330 3148. www.implementations.co.uk

COLIN STOTT – DOWSER Location, Second Opinion Readings, Referrals, Advice Website at www.colinstottdowser.com
Email: Colin@colinstottdowser.com Tel: 0161 796 0296

Dowsing Holiday in Poland

Discover the spirit of Sacred Space

June 18th - 25th 2005

Cost £250 + flight (full board)

Spend a week with like minded people in a cosy luxury Hotel situated near the medieval City of Gdansk, surrounded by lakes, in one of the worlds finest Nature Reserve.

- Dowse for earth energies which are very powerful on the 21st-23rd June among 22 stone circles
- Explore archaeological sites
- Visit long Barrows constructed in the 1st & 2nd century
- Make healing remedies from rare plants
- Observe wildlife and birds unique to the area
- Sail or do some fishing in clear waters
- Relax in the Jacuzzi, sauna, swimming pool or gym
- Taste wonderful Polish cuisine and speciality vodkas, have fun!
- Meet Polish dowsers, let us share knowledge and experience.

Give yourself the opportunity to rediscover yourself and switch off from stress.

Only 23 places available so book early

For more information contact

Irenka Danielewicz-Herbert tel. 01633 669638

E-mail: irenka.herbert@ntlworld.com

Or Jason Viner tel. 01179 498933

E-mail: jasviner@blueyonder.co.uk

Advertisements

THE FENG SHUI SOCIETY (London Group)

TALKS AND EVENTS

The Feng Shui Society holds enjoyable and informative talks at Rudolph Steiner House, 35 Park Road, London NW1 6XT between 7.30-9.30pm on the first Wednesday evening of each month. You are cordially invited to join us from 7pm (pay at the door) Non-members £5 and FSS members £3 – including light refreshments

- 2nd February Earth Bound Spirit Release – Wilma Davidson
- 2nd March Healing Places with earth Acupuncture – Richard Creightmore
- 6th April Space Clearing with Plant Essences – Steve Johnson
- 4th May Electricity, Water and Healthy Homes – speaker TBC
- 1st June What Consultants Don't Tell you – An Interactive Panel event

The Feng Shui Society has the unique role of being the only independent, non-profit making Feng Shui Organisation in the UK. It maintains professional standards to promote ethical practices of Feng Shui. The Society also serves as a focus for exchange of information for the Feng Shui community and for other lay enthusiasts who wish to develop their knowledge and apply the principles to enhance their own lives.

Further details of the above events, membership and courses are obtainable from The Feng Shui Society Website www.fengshuisociety.org.uk or from the FSSLG chair Sylvia Bennett on 020 7916 9880

Labyrinth Society Symposium

21 & 22
May 2005

Woodgreen
Village Hall,
Hampshire,
England



Walk the Breamore Mizmaze and hear speakers from all over Europe, at the 2nd TLS European Regional Gathering on 21 & 22 May 2005, to be held at Woodgreen Village Hall (south of Salisbury and Stonehenge). On Saturday there will be speakers from all over Europe, with optional dinner on Saturday evening, and on Sunday a guided walk to the wonderful Breamore Mizmaze, with picnic lunch provided.

For further details and ticket applications contact:
The Labyrinth Society, c/o 53 Thundersley Grove,
Thundersley, Essex SS7 3EB, UK

Or visit the events page on our websites:
www.geomancy.org/tlsuk
www.labyrinthos.net/events

Dowsing for your Health

A series of Comprehensive workshops covering the entire BSD core curriculum and much more including, Sanjeevini, angels etc

Learn to dowse with a pendulum for your own health and those of your friends and family. Identify the root cause of illness, including food allergies and stress

Held in the wonderful cathedral city of Worcester, in a calm and relaxed atmosphere

PART ONE

Workshops to be held on the following dates

Saturday 16th April
Saturday 14th May
Saturday 18th June

For more information please contact Chris Johnson on 01905 455138
Or email chjdowsing@supanet.com

Chris Johnson is a registered BSD Tutor and a member of the BSD Professional Register

ARCHAEOLOGICAL DOWSING WORKSHOP

Saturday 1st October 10.15am-5.30pm at the impressive Cressing Temple complex near Witham, Essex

Headed by BSD registered tutor and Chairman of the BSD Special Interest Archaeological Group John Baker. This is a full day hands on workshop to try out your own dowsing abilities over known Romano-British and Iron Age sites. Numbers limited to 28 people.

Cost is £45.00 and includes morning and afternoon tea and a Cressing ploughmans lunch.

For application form contact John Baker, 68 Iron Mill Lane, Crayford, Kent DA1 4RR or Email: mrimages@globalnet.co.uk

Accessing your Intuition via Dowsing

With Roy & Ann Procter

Workshops:

(Accredited by National Open College Network)
Next dates: Saturdays March 5th or April 2nd,
or Friday April 8th, price £65

“Coombe Quarry”, Keinton Mandeville, Nr Somerton, Somerset TA11 6DQ
Tel.01458 223215 Fax. 01458 224234
For details see:
<http://dSPACE.dial.pipex.com/procter>